

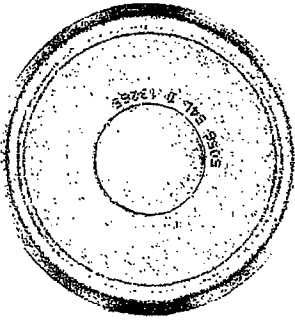
**GARFIELD COMMUNITY SUPERBLOCK
MASTER PLAN REPORT**



MARCH 10, 2005

**SEATTLE PUBLIC SCHOOLS
THOMAS RENGSTORF AND ASSOCIATES
BLRB ARCHITECTS**

Recordable



GARFIELD SUPERBUCK
MASTER PLAN REPORT
3.10.05
THOMAS KUNIGSTORF
RESOURCES

TD

TABLE OF CONTENTS

PART 1:	PROJECT BACKGROUND	pg. 1
PART 2:	COMMUNITY COMMENTS & DESIGN TEAM RECOMMENDATIONS	pg. 1
PART 3:	LANDSCAPE DESIGN ELEMENTS	
	Site Furnishings	pg. 10
	Paving	pg. 11
	Landscaping	pg. 12
	Arts and Culture	pg. 13
PART 4:	LEGACY AND PROMISE PROMENADE	
	Option A - Midblock Scheme	pg. 17
	Option B - Diagonal Scheme	pg. 17
PART 5:	CONCLUSIONS	pg. 18
APPENDIX		pg. 19
	Meeting Minutes	February 21, 2004 October 1, 2004 October 16, 2004 February 11, 2005 March 10, 2005
	Garfield Master Plan: Subprojects Delineation Central Area Action Plan II Central Area Neighborhood Matrix Summary	
	History and Art	The Garfield Community (newsletter) Location for Artwork Garfield High School Rebuild by Robert Stephens

LIST OF FIGURES

PART 1. PROJECT BACKGROUND

Figure 1:	Sub-Areas Key Plan	pg. 2
Figure 2:	Landscape Perimeter Recommendations	pg. 3

PART 2. COMMUNITY COMMENTS & DESIGN TEAM RECOMMENDATIONS

Figure 3:	Sub-Area 1	pg. 4
Figure 4:	Sub-Area 2	pg. 5
Figure 5:	Sub-Area 2b & 2c	pg. 6
Figure 6:	Sub-Area 3	pg. 7
Figure 7:	Sub-Area 4	pg. 8
Figure 8:	Sub-Area 6	pg. 9
Figure 9:	Sub-Area 5	pg. 9

PART 3. LANDSCAPE DESIGN ELEMENTS

Figure 10:	Benches and Trash Receptacles	pg. 10
Figure 11:	Lighting	pg. 10
Figure 12:	Textured Crosswalk Paving	pg. 11
Figure 13:	Special Paving at Crosswalk	pg. 11
Figure 14:	Textured Concrete Paving	pg. 11
Figure 15:	Street Trees	pg. 12
Figure 16:	Low Groundcover/Shrubs	pg. 12
Figure 17:	Native Plantings	pg. 12
Figure 18:	Textured Art in Concrete	pg. 13
Figure 19:	Inlaid Tile Concrete	pg. 13
Figure 20:	Sculpture at 23rd and Jackson	pg. 13

PART 4. LEGACY AND PROMISE PROMENADE – DESIGN SCHEMES

Figure 21:	Option A - Midblock Scheme	pg. 15
Figure 22:	Option B - Diagonal Scheme	pg. 16

LIST OF FIGURES

PART 1. PROJECT BACKGROUND

Figure 1:	Sub-Areas Key Plan	pg. 2
Figure 2:	Landscape Perimeter Recommendations	pg. 3

PART 2. COMMUNITY COMMENTS & DESIGN TEAM RECOMMENDATIONS

Figure 3:	Sub-Area 1	pg. 4
Figure 4:	Sub-Area 2	pg. 5
Figure 5:	Sub-Area 2b & 2c	pg. 6
Figure 6:	Sub-Area 3	pg. 7
Figure 7:	Sub-Area 4	pg. 8
Figure 8:	Sub-Area 6	pg. 9
Figure 9:	Sub-Area 5	pg. 9

PART 3. LANDSCAPE DESIGN ELEMENTS

Figure 10:	Benches and Trash Receptacles	pg. 10
Figure 11:	Lighting	pg. 10
Figure 12:	Textured Crosswalk Paving	pg. 11
Figure 13:	Special Paving at Crosswalk	pg. 11
Figure 14:	Textured Concrete Paving	pg. 11
Figure 15:	Street Trees	pg. 12
Figure 16:	Low Groundcover/Shrubs	pg. 12
Figure 17:	Native Plantings	pg. 12
Figure 18:	Textured Art in Concrete	pg. 13
Figure 19:	Inlaid Tile Concrete	pg. 13
Figure 20:	Sculpture at 23rd and Jackson	pg. 13

PART 4. LEGACY AND PROMISE PROMENADE -- DESIGN SCHEMES

Figure 21:	Option A - Midblock Scheme	pg. 15
Figure 22:	Option B - Diagonal Scheme	pg. 16

PART 1: PROJECT BACKGROUND

The Garfield superblock located in Seattle's Central District is shared by Medgar Evers Pool, play fields, Teen Life Center, a community center all owned and operated by Seattle Parks and Garfield High School. The site boundaries are Cherry St. to the north, 23rd Avenue to the west, 25th Avenue to the east, and Alder St. to the south. The area is mainly residential in character along 25th and Alder, with mixed commercial uses at Cherry and 23rd Avenue.

Current plans by Seattle Schools include renovation of the historic Garfield High School, addition of an on site bus lane, a performing arts and physical education building, all weather full size track, and some additional parking along Alder St. For evening events at the Performing Arts Center, over 50 additional spaces are planned at Horace Mann (Nova) School to the north of Cherry St.

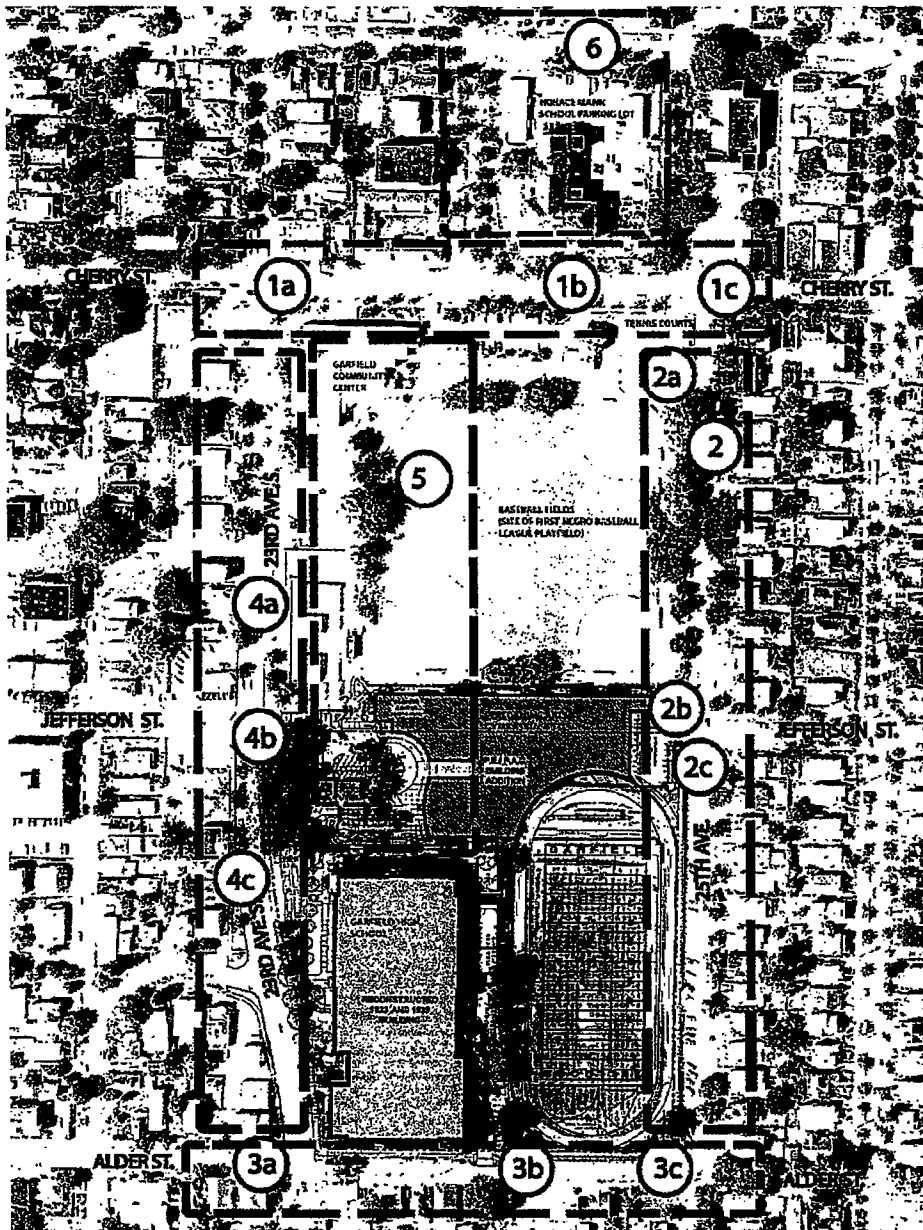
This Garfield Superblock Master Plan was developed as a condition for approval of a departure from the Seattle Zoning Code for parking at the high school. Thomas Rengstorf and Associates (TRA) landscape architects was asked by the Seattle School District to study improvements to the pedestrian walkway between the Performing Arts building and Horace Mann School, including safety lighting and signage. TRA also provided recommendations for streetscape improvements at the perimeter of the superblock, with the general goal of giving the subject area consistency in design features.

The Central Area Design Guidelines were developed as a resource to guide future development and planning in the area. It provides a comprehensive view for integrating the superblock within a larger context.

PART 2: COMMUNITY COMMENTS & DESIGN TEAM RECOMMENDATIONS

Prior to meeting with the public, the design team of BLRB Architects and Thomas Rengstorf and Associates met with representatives from municipal agencies to share information on factors that would affect the master plan. Representatives from Seattle Department of Transportation (SDOT), Department of Neighborhoods, City Council, Seattle Parks and Recreation and others provided input on integrating the neighboring community with the Garfield superblock.

A community workshop was held on October 16 at Garfield High School by the design team and the Seattle School District to discuss site issues affecting the community. The design team facilitated discussion with community participants using a matrix of site issues. Topics included art, access and safety, lighting, neighborhood character, streetscape, parking and landscaping. The following section documents the comments from community and Parks participants. TRA landscape design recommendations respond to these comments as they relate to landscape and planning issues. Transportation and parking issues that were brought up are noted for record and discussion purposes, and will need further follow up.



KEY:

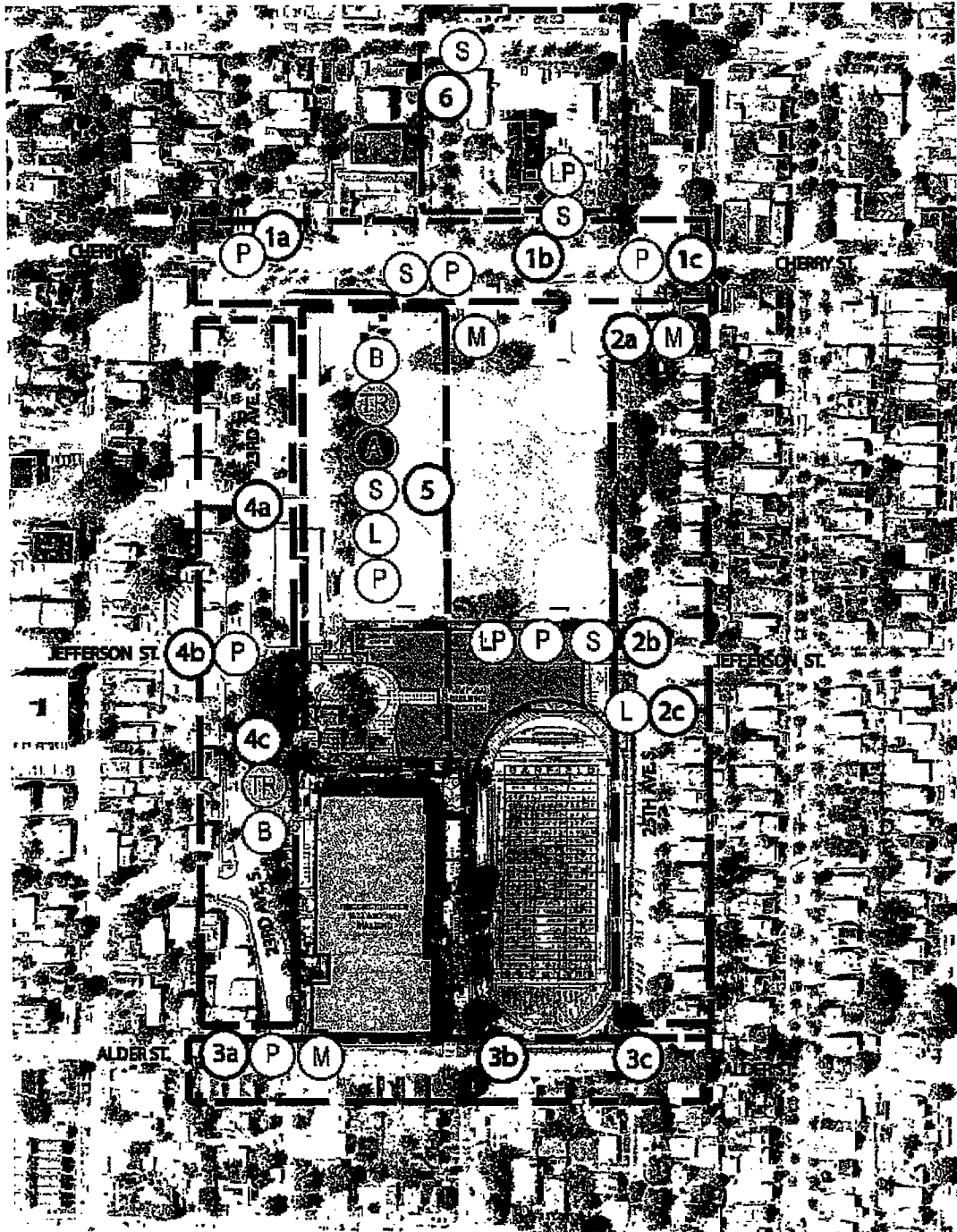
- SUB-AREA 1: Cherry Street
Borders-23rd & 25th
- SUB-AREA 2: 25th Avenue
Borders - Cherry & Alder
- SUB-AREA 3: Alder St.
Borders - 23rd & 25th
- SUB-AREA 4: 23rd Avenue S.
Borders - Cherry & Alder
- SUB-AREA 5: Central Path Connection - Garfield
Borders - Jefferson to Cherry
- SUB-AREA 6: Central Path Connection - Horace Mann
Borders - Cherry to Columbia

SUB-AREAS KEY PLAN
GARFIELD SUPERBLOCK MASTER PLAN

Figure 1



Not to Scale



KEY:

LANDSCAPE PERIMETER RECOMMENDATIONS
GARFIELD SUPERBLOCK MASTER PLAN

Figure 2

(P) Special Paving/
Potential for Crosswalk

(B) Bench

(LP) Light Pole/Bollard

(S) Signage (ADA, Wayfinding)

(L) Landscape (Trees and plants)

(A) Art Element

(M) Maintenance

(TR) Trash Receptacle

(I)
N

PART 2: COMMUNITY COMMENTS & DESIGN TEAM RECOMMENDATIONS

Figure 1 Sub-Areas Key Plan shows the superblock divided into six sub-areas with locations that correspond to community comments. TRA's landscape recommendations for lighting, site furnishings, and paving are shown for the superblock site on Figure 2 Landscape Perimeter Recommendations. Each landscape design element is described in more detail in Part 3 - Landscape Design Elements (pg. 10).



Sub-Area 1: Fig. 3

Excerpts from the community workshop and from meeting minutes recorded by Steven Moore of Heery International are noted below in italics. (See Appendix for the complete meeting minutes). Recommendations by TRA are noted below the comments as appropriate to landscape, furnishings and paving.

- ***Sub-Area 1a - Figure 3***

This area is prime for commercial and multi-family housing along the 23rd street corridor. There were no concerns voiced in this area.

Potential development has been discussed but there are no current plans

Recommendations:

Provide special paving on adjacent sidewalks and within street intersection for future development at this corner. Special paving refers to the use of brick, special pattern, texture and integral color as an alternative to the city standards for concrete and asphalt. Special paving often helps to emphasize public areas of gathering and to slow traffic. See Part 3- Landscape Design Elements for photographic examples of special paving. This will anchor the Cherry and 23rd node as an important superblock boundary and gateway.

Consider future artwork at the corners to complement the existing sculpture at the Garfield Community Center corner, and to provide continuity with existing artwork along 23rd Ave.

- ***Sub-Area 1b - Figure 3***

There is nothing scheduled but with the 23rd St. corridor development, textured brick crossings could be an option.

**PART 2: COMMUNITY COMMENTS
& DESIGN TEAM RECOMMENDATIONS**

• **Sub-Area 2a - Figure 4**

Where are the pedestrians crossing? There is a mid block crossing that does not line up with the proposed path (1b). Should the crossing include a curb or street-crossing bulb? Neighbors thought this was a good idea. This mid-block crossing should be relocated to align with the proposed pathway including a bulb.

Concern was raised with crosswalk striping maintenance. (Sub-Area 1c) New crosswalks included in the construction project will be done by the contractor but typical maintenance is done by SDOT.

Recommendations:

Provide a direct connection between Horace Mann parking lot and Garfield at Cherry St. with appropriate wayfinding signs and textured crosswalks for safety purposes. Special paving and curb bulbs should be installed to reduce traffic speed. For crossing options on Cherry St. see Part 4 Legacy and Promise Promenade - Design Schemes.

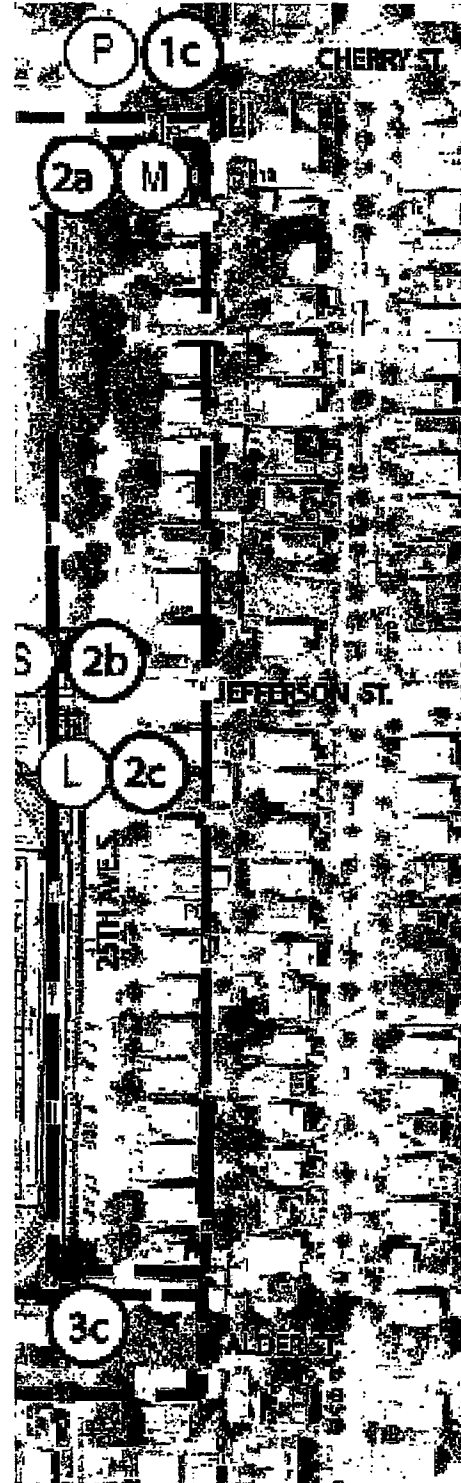
Provide special paving at primary sidewalks and in street intersections.

• **Sub-Area 2a - Figure 4**

Neighbors raised concerns about safety, particularly near the ball fields. There is inadequate lighting and heavy vegetation in the area of the ball fields.

Recommendations:

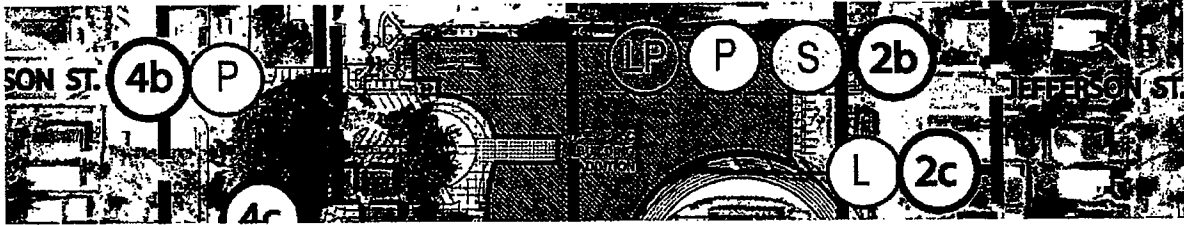
Limb tree buffer along 25th Ave. at sportsfields a minimum of 6'-8' from the ground to ensure visibility into the fields. In areas where future planting is to be installed, provide low groundcovers to maintain views into the site. Per CPTED (Crime Prevention Through Environmental Design) recommendations, vigilance by police and neighbors will prevent unlawful activity within the superblock zone.



Sub-Area 2

Fig. 4

PART 2: COMMUNITY COMMENTS & DESIGN TEAM RECOMMENDATIONS



Sub-Area 2b & 2c: Figure 5

- ***Sub-Area 2b-Figure 5***

There are paths on campus that run east/west and north/south. The sidewalk at the north currently has no stairs. The new design will indeed have stairs. Suggestion to look at adding a ramp or switchback so there is bike/ADA access along the north side. Architect to look at a space between ballfield and addition to see what can fit.

Save the existing memorial rhododendrons located to the north of the school.

Recommendations:

Provide lighting, wayfinding signage, and paving at new paths for bike, pedestrian use, and ADA access. Lighting choices may be pole or bollard lighting.

The memorial rhododendrons will be transplanted per school renovation plans. They will be integrated into a location as yet to be determined.

- ***Sub-Area 2c-Figure 5***

Buffer is needed to block out sportsfield lighting.

Neighbors raised concern with speeding automobiles along 25th. Suggested installing an island to slow traffic.

Per the neighbors, one-way traffic to the south would be preferable.

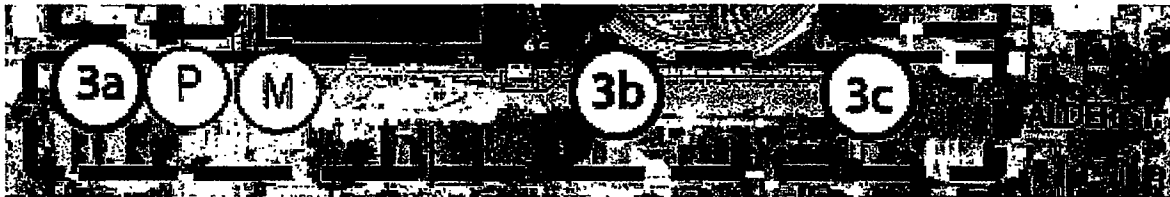
25th should be a main pedestrian route. The sidewalks should be fixed. These sidewalk restorations should occur between Yesler to Cherry and Alder to MLK.

Recommendations:

Provide adequate security lighting at the sports fields.

Plant additional tree buffer at edge of sportsfields and maintain density in the upper tree zones to block undesirable sportsfield lighting.

PART 2: COMMUNITY COMMENTS & DESIGN TEAM RECOMMENDATIONS



Sub-Area 3 Fig. 6

- **Sub-Area 3a-Figure 6**

The light at this corner (Alder and 23rd) is a pedestrian light to cross 23rd. There is no traffic light on Alder, just a stop sign. Per the neighbors this is a dangerous spot due to fast-traveling vehicles coming north on 23rd. There is a limited site line due to the hill and accessing 23rd from Alder is almost impossible. The group suggested that a four-way traffic light be installed.

- **Sub-Area 3b-Figure 6**

Student stated that speeding occurs on Alder Street and this is a hazard to the students. With the main congestion point being relocated to the north entry this hazard should be decreased. Additionally, angled parking along Alder should help slow down traffic. Suggestion to install textured brick crossings at Alder and 23rd and 24th would significantly help issue.

- **Sub-Area 3c-Figure 6**

Neighbors expressed interest in retaining tree located at the corner of Alder and 25th in conflict with scoreboard planned location.

Recommendations:

Provide textured crosswalks and special paving at 24th and Alder and 23rd and Alder to slow traffic. Add signage to slow traffic at the crest of the hill and at the midblock of Alder.

Shrubs located on the sidewalk to the south of 23rd & Alder currently obscures visibility of oncoming traffic. Pruning is required.

Design team will study options for scoreboard location and retain tree as possible.

PART 2: COMMUNITY COMMENTS & DESIGN TEAM RECOMMENDATIONS

- **Sub-Area 4a & 4c-Figure 7**

Recommendations:

Opportunity to install special paving at drop off areas along 23rd Avenue at Medgar Evers Pool (4a), and new bus lane at 23rd and Jefferson (4c). Trash receptacles and seating areas should be provided in these areas as well.

- **Sub-Area 4b-Figure 7**

This is a main student crossing during the lunch period. Students congregate at Ezell's causing congestion at this corner. Ezell's is planning to develop this property per Don Gillmore (of Seattle Schools). The goal here is to understand what the neighborhood and business developers desire. ...there is a Cherry Street Business Group which should be queried for input.

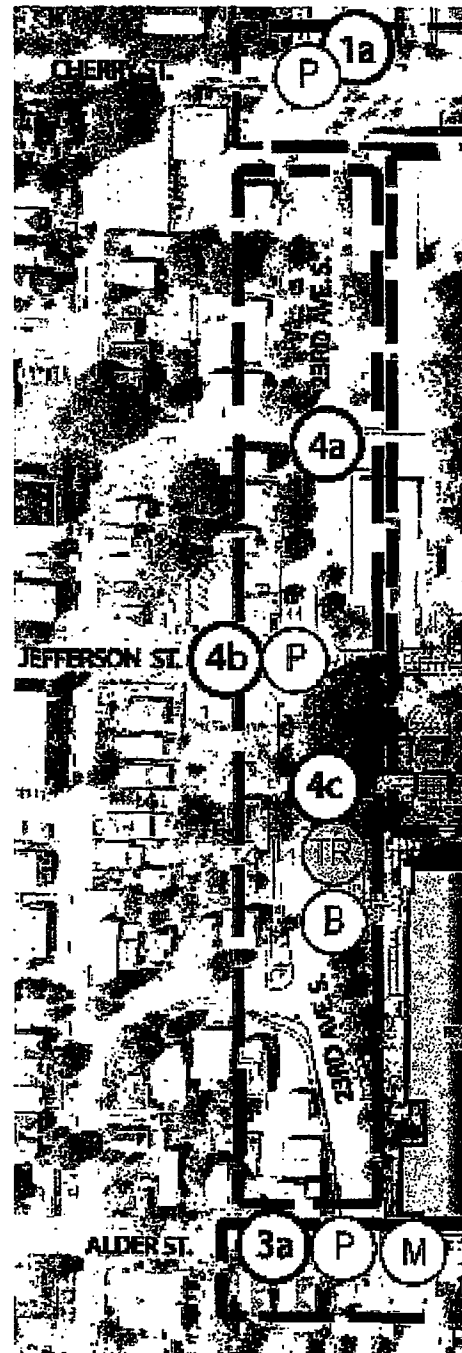
..The bus stop at this corner is a major feature and potential cause of congestion. This is a main connection to the downtown area. This is a main connection to the downtown area. Would moving the stop be good or bad? Many of the patrons of the pool and students use this bus stop. It was suggested to leave the bus stop in its current location.

Recommendations:

Provide textured crosswalks and special paving at 23rd and Jefferson. This will be a primary entry to the school and Performing Arts Building. Therefore, safety and visual intensity is critical. Lighting, paving, and flowering trees and shrubs will accentuate this focal area.

As a high profile thoroughfare, 23rd Ave. provides continuity from neighboring areas as a pedestrian route, and vehicular corridor. Streetscape should reflect the neighborhood scale, using natives, art elements and low plantings.

Site furnishings such as benches trash receptacles should be provided, particularly at entries and nodes of high traffic.



Sub-Area 4

Fig. 7

PART 2: COMMUNITY COMMENTS & DESIGN TEAM RECOMMENDATIONS

- **Sub-Area 5 & 6-Figure 8 & 9**

Pathway Connection from Horace Mann to Performing Arts Building - Legacy and Promise Promenade:

Primary lighting along main path, what kind? Thirteen to 15 foot poles along path. Parks Department to review what type of lights. Bollard lights have higher tendency for damage and graffiti.

Opportunities for art work by students or professional artists to commemorate armed forces, native American Art. Name the pathway to create an identity. Provide varied lighting. Do not provide covered areas. Use computer scheduled systems for signs (special events). Identify playfield history and provide new location for Negro League plaque on field.

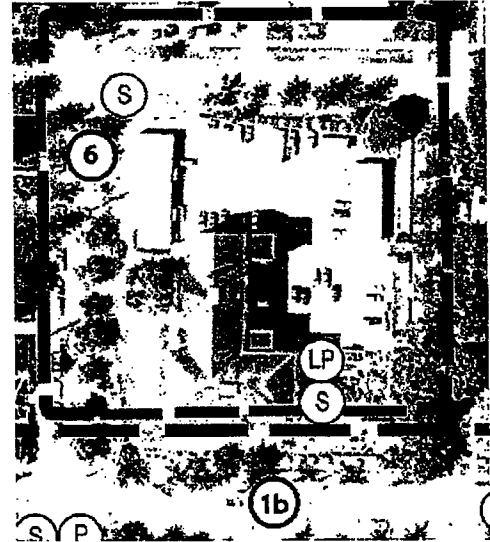
Lighting needed for parking at Horace Mann School

Recommendations:

Provide paving for new pedestrian and parking configuration.

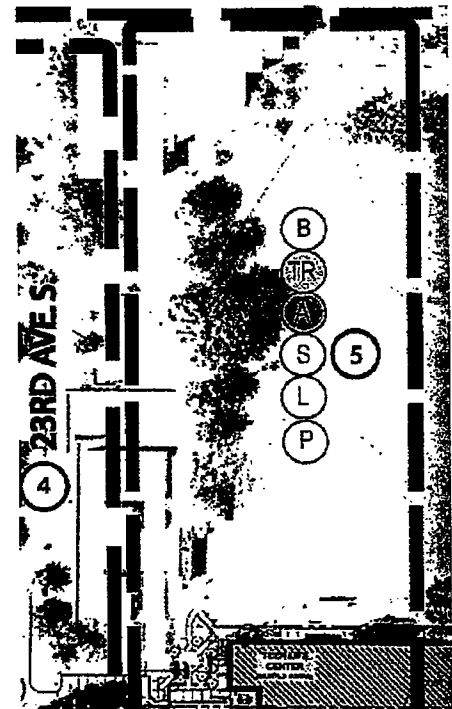
Provide landscaping, lighting, and wayfinding from Horace Mann parking lot to Garfield site.

See Part 4 - Legacy and Promise Promenade-Design Schemes for options on crossings and path configuration.



Sub-Area 6

Fig. 8



Sub-Area 5

Fig. 9

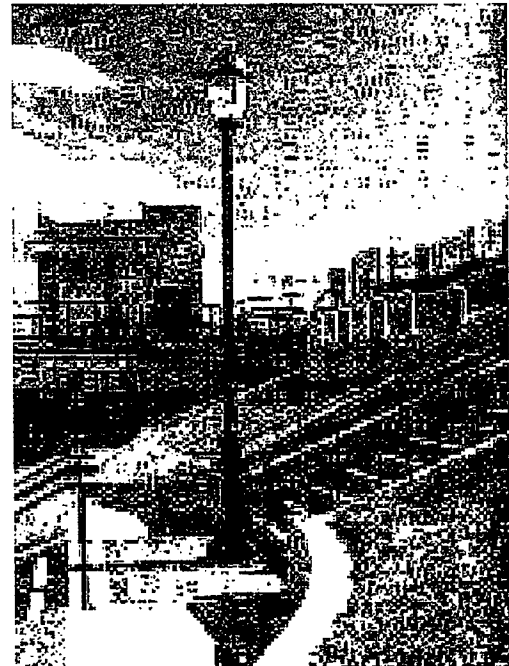
PART 3: LANDSCAPE DESIGN ELEMENTS

SITE FURNISHINGS

- Site furnishings including seating, signage, and lighting are recommended throughout the site. Per Parks Department requests, site furnishings and paving should be vandal resistant, easy to maintain and prevent sleeping and loitering activity.
- Benches and trash receptacles should be located in gathering and high pedestrian traffic areas. Benches may be manufactured, or custom art pieces that integrate cultural or historic references. Unique projects like these could be financed by private donors, or through art grants. (See Fig. 10)
- Signage: Directional signs are needed to direct visitors accessing the Garfield site from the Horace Mann site for evening events. Signs should be easy to identify, well lit, and integrated with the final pathway design.
- Lighting discussions with the community workshop indicated that 12-15' pole lights adjacent to the central pathway is desirable. Security lighting and computer controlled systems should also be considered for coordination during simultaneous evening sports events at the playfield (See Fig. 11).



Benches and Trash Receptacles Fig. 10



Lighting Fig. 11

PART 3: LANDSCAPE DESIGN ELEMENTS

PAVING

- Textured crosswalks improve safety for both pedestrians and vehicles. These provide potential solutions for locations where pedestrian crossings occur at haphazard locations and vehicle speeds are excessive.

Textured crosswalks are speed tables outfitted with crosswalk marking and signage to facilitate safe pedestrian crossings, at a level street. Also, by raising the level of the crossing, pedestrians are more visible to approaching motorists. (See Fig. 12)

- **Special Paving:**
Textures and color in the crosswalk serve as an aesthetic and visual reminder to drivers to reduce speeds. (See Fig. 13)

Patterns may be created with integral color, and custom textures for attractive and slip resistant safe crossings and help to create a more intimate neighborhood scale

Color, pattern and motif can be used to create unique themes and character throughout the superblock, and to create a cohesive link along 23rd between Madison and Jackson

Precast concrete pavers, inlaid art tiles or donor paving squares may be used to commemorate gathering areas within the site, or at special intersections along the Legacy and Promise Promenade.



Textured Crosswalk Paving

Fig. 12



Special Paving at Crosswalks

Fig. 13



Textured Concrete Paving

Fig. 14

PART 3: LANDSCAPE DESIGN

LANDSCAPING

Personal safety is an important consideration for urban design projects. Low groundcover is recommended along the streetscape to allow visibility into the superblock site, and to the street.

Street Trees: Trees recommended along 23rd and at the streetscape help to soften the transitions at the street and will be coordinated with the City Arborist Tree Plan and recommendations.

Landscape pruning should allow for limbing existing trees 6'-8' off the ground to maximize lighting and sitelines.

Hardy native groundcovers should be used to ensure survival in heavy traffic areas, and to reduce irrigation needs. Tree and groundcover species should be selected from the City of Seattle Department of Planning and Development. (See Fig. 17)

Integrate and plan for the transplanting of significant trees and plants to the newly renovated school and grounds where possible



Street Trees

Fig. 15



Low groundcovers/shrubs

Fig. 16



Native plantings

Fig. 17

PART 3: LANDSCAPE DESIGN

ARTS AND CULTURE

A diverse culture and history at the Garfield site provides a strong base for art opportunities. Community resident Robert Stephens indicated that Garfield was home to the first Negro Baseball League playing field. It was suggested that the commemorative plaque in the playfield be relocated to a better spot. Former Garfield alumnus including notables Quincy Jones musician, Minoru Yamasaki architect, and William Nakamura Medal of Honor recipient would also be celebrated through art projects.

Other suggestions include a Native American work and another dedicated to the armed services. The use of quotes in concrete and student created artwork were also mentioned as possible art projects. (See Appendix for Legacy of Promise by Stephens).

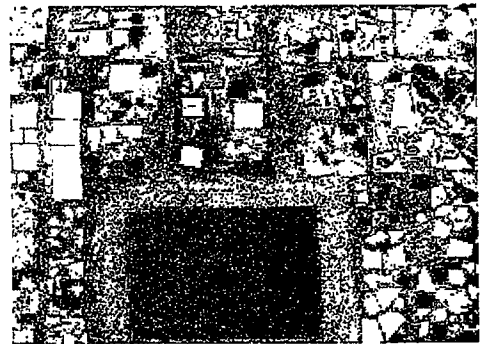
The opportunity to integrate public art at Cherry St. could also accentuate key nodes along 23rd Avenue, while providing strong continuity to future developments at Madison reinforcing the Cultural Walk concept.

The community was supportive of decorative paving, colored, and textured markings. Parks emphasized that care should be exercised with the design of inlaid metals, tiles to avoid water and debris collection, and to avoid walking hazard and maintenance issues. (See Fig. 18-20)



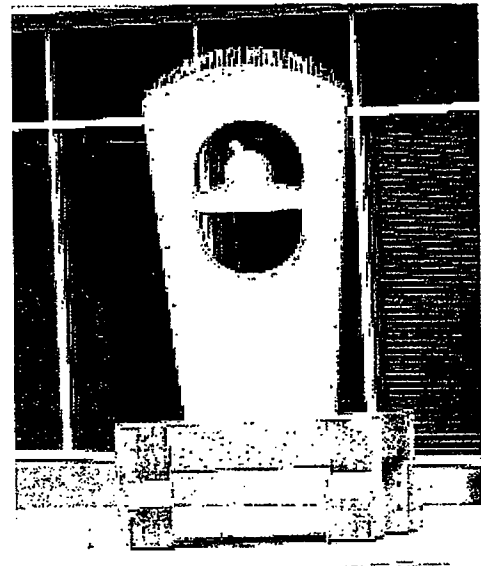
Raised Art in Concrete

Fig. 18



Inlaid Tile Concrete

Fig. 19



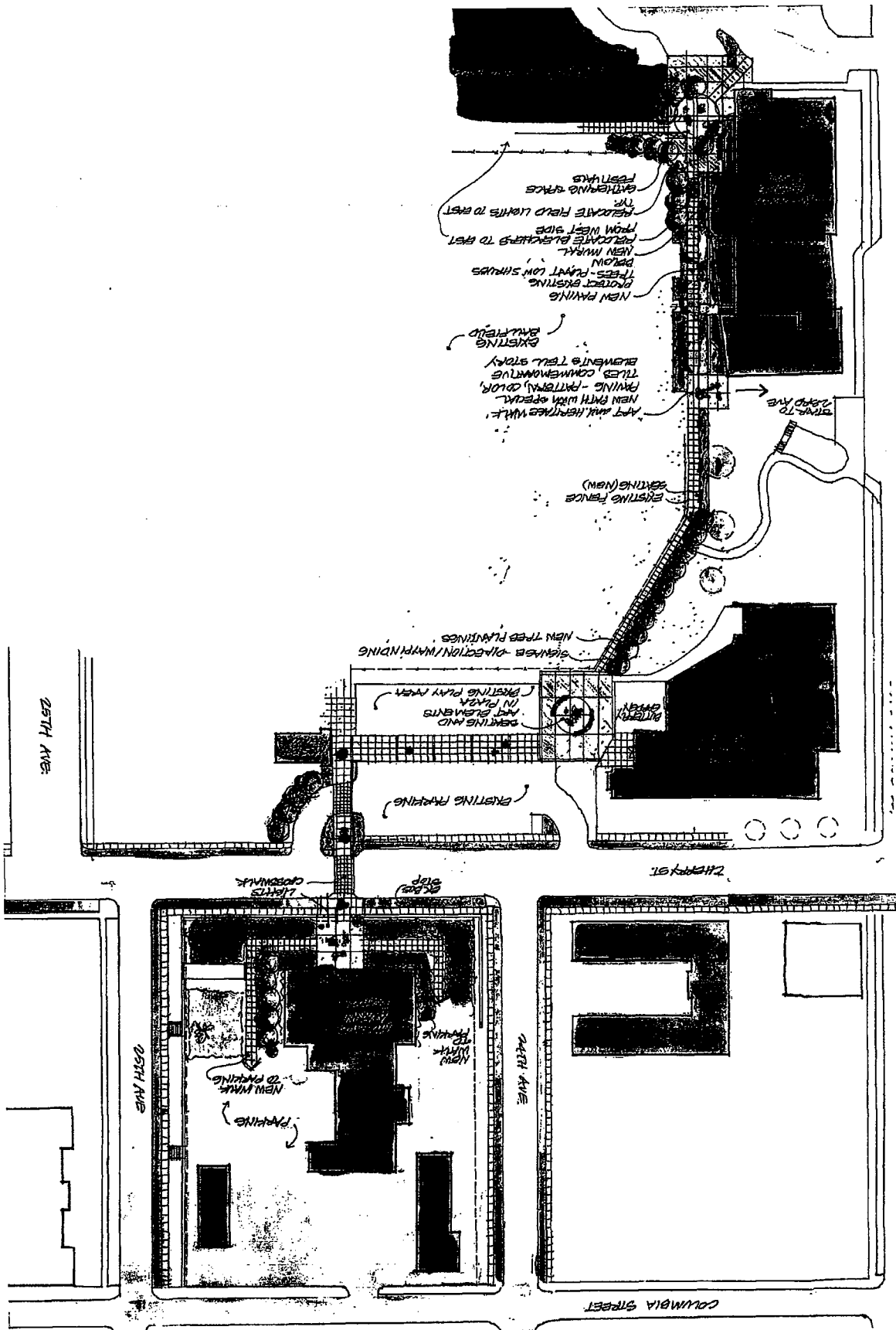
Sculpture at 23rd and Jackson

Fig. 20

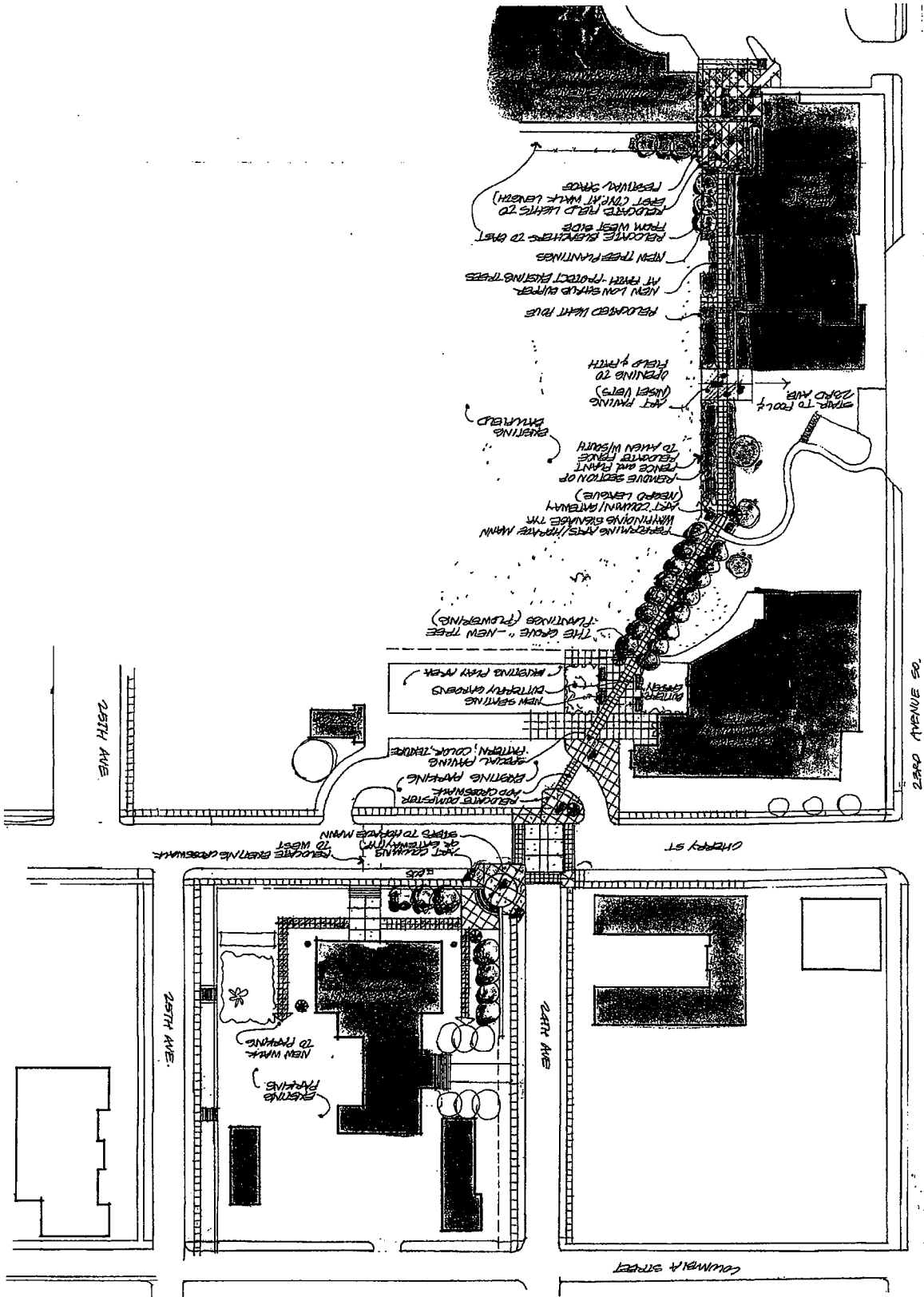
PART 4: LEGACY AND PROMISE PROMENADE DESIGN SCHEMES



Legacy and Promise Promenade Option A: Midblock Scheme Scale: NTS



Legacy and Promise Promenade
Option B: Diagonal Scheme
NTS



PART 4 - LEGACY AND PROMISE PROMENADE

OPTION A - MIDBLOCK SCHEME

- **Cherry St. Crossing:** The proposed crossing remains at midblock where existing crosswalk is located. Crosswalk configuration maintains on-street parking and bulb out. Proposed walkway south of Cherry is located through the existing landscape planter, and continues westerly to the existing diagonal walkway.
- **Hardscape:**
The proposed central plaza located at the entry to the Community Center provides a gathering area, with benches and an art element.
Additional gathering nodes are located midway through path and at Performing Arts Building entry. Special paving with art tiles, painting or plaques tell story of Garfield's history and culture as visitors walk along the path.
- **Lighting:** Path lighting and parking lot lighting is proposed at the Horace Mann site. This will ensure safety for the proposed access to the Cherry St. crossing. Existing baseball field lighting is located in the center of the existing path at the Garfield site. It is recommended that the lights be relocated to the east, closer to the fields and out of the path. Low level lighting or bollard lighting may be located for evening events at the Performing Arts Center when playfield lights are not in use.
- **Site Furnishings and Signage:** Wayfinding signs to Performing Arts and Horace Mann parking is provided at points as noted on plan. Proposed seating both custom at circular plaza and manufactured along the pathway.

OPTION B - 24th AVENUE- DIAGONAL SCHEME

- **Cherry St. Crossing:** Proposed crossing at 24th Avenue at four corners, creates a direct approach from the Garfield site to the Horace Mann parking lot. A diagonal connection with stairs would be required at the southwest corner of the existing retaining wall at Horace Mann School. At the Garfield Community Center site, the diagonal path continues diagonally through the site of the existing dumpster.
- **Hardscape:**
The proposed curved stair at the Horace Mann retaining wall would serve as focal point for the superblock with art columns or gateway. This area would also serve those waiting at the adjacent bus stop to the east.

Additional gathering nodes are located at the community center entry, flanked by Butterfly Gardens and seating. The largest gathering space is located to the south, and will serve as a festival and performance space. Both ends of the walkway provide a meeting space prior to performances, and as pivotal nodes leading to the east and west entries of the superblock site.

PART 4 - LEGACY AND PROMISE PROMENADE

Recommend relocation of sportsfields lights and bleachers to the east per plan. Low level pole lighting may be located along the pathway to be used for evening events at the Performing Arts Center when playfield lights are not in use.

- **Signage:** Wayfinding signs to Performing Arts and Horace Mann parking is provided at points as noted on plan.
- **Art:** Art Columns or gateways provide striking landmarks and anchoring device at the Horace Mann site and Garfield Performance Arts Building. The art columns along the promenade provide continuity to the theme, and strengthen the diagonal connection.
- **Landscape:** A double row of trees accentuate the boulevard feeling, and enhance the gate effect created by the art column/gateways. Hardy and seasonal groundcover and plantings soften the path edges along the length of the promenade.

PART 5 - CONCLUSION

After review, comment and approval by the City Council, Parks Department and other agencies, the Garfield Superblock Master Plan will be presented to the community as a proposal for future site improvements. The selection of the concept alternatives for the Legacy and Promise Promenade will rely on the input from Seattle Schools, the Seattle Parks Department, community and other related municipal agencies.

Prior to beginning this master plan study, the community workshop participants were informed by Seattle Public Schools that there was a lack of funding to finance the construction of this project. It was the intent that by doing the study, community partnerships could be formed with city and state agencies to obtain funding for grants and donations. With the vision of both city and community members, it is intended that the goals in the master plan will be implemented as the superblock and neighborhood continue to develop.

APPENDIX

Garfield School Design Team - Community Update and Workshop
Saturday 21 February 2004

**Garfield Campus Renovation Activities Proposal
and
Utilization of Central Area Action Plan**

TASK:

- To have the Garfield High School Design Team develop plans and recommendation for the redevelopment of the city blocks that make up the greater Garfield Campus: [Alder to Cherry & 23rd Ave. to 25th Ave.] Utilizing the goals and guidelines set forth in the Central Area Action Plan (approved by City Council in 1998), such recommendations shall be submitted to the City of Seattle noted Departments and Seattle School Board for approval and assistance in securing funds for implementation.

PURPOSE:

- Continue work of redeveloping the internal and external parts of the greater Garfield Campus
- Not create a different committee to do the same work being done by the Garfield School Design Team

MISSION:

- Institute a way whereby the "Whole Village" can participate in the continuing work towards redeveloping the Building(s), Grounds and Streetscape that makes up the greater Garfield Campus.

GOAL:

- To develop plans, recommendations, and coordination—using the Central Area Action Plan—to incorporate the Garfield H.S. renovation plans with the improvement plans for the larger Garfield area neighborhood.

OBJECTIVES:

- To utilize the Central Area Action Plan as a means to assist the Garfield School Design Team implement their building, grounds, and streetscape plans for the renovation of Garfield High School, Garfield High School Gym, and Garfield Teen Life Center and Garfield Campus.
- To have the Garfield School Design Team participate with the Department of Neighborhoods in preparing and presenting plans and recommendations for the application of the guidelines and goals of the Central Area Action Plan to the greater Garfield Campus's redevelopment.
- To utilize the Central Area Action Plan as a tool to smooth out the permit approval time, and reduce bottlenecks and difficulties in securing required permits and zoning variances needed to implement the Design Team's design plans for the Garfield Building, Grounds, and Streetscape.
- To improve coordination of Central Area Community, Seattle School District, and the City of Seattle's planning and implementation of neighborhood projects, such as this project of continuing to implement the work of renovation/redevelopment of Garfield Campus Complex.

METHODOLOGY:

- Have the existing Garfield School Design Team be officially recognized by the Department of Neighborhoods, as the lead Neighborhood Committee implementing the school component of the Garfield Campus of the Central Area Action Plan.

NOTE:

- The City of Seattle Department of Neighborhoods (DON) is the city department that is responsible for providing coordination and assistance to Neighborhood Groups (via the Stewardship Committee) in their efforts to implement their Neighborhood Plan(s).

EVALUATION:

- Selected projects will be completed with cooperation and collaboration with Seattle Public School, Central Area Community, Seattle Parks Department and the other listed City of Seattle Departments, noted Federal Departments and Foundations such as the Garfield High School Foundation, and Private Donors.

Area and Scope of Work

Area:

Garfield Campus consists of a six square block area located in the core neighborhood of Seattle's Central District.

❖ **Borders:** [see display]

- South Boundary: East Alder Street
- West Boundary: 23rd Avenue
- North Boundary: East Cherry Street
- East Boundary: 25th Avenue

❖ **Building & Grounds Presently**

- Garfield High School (School District) Mixed use: school & community
- Garfield High School Gym (School District) Mixed use: school, Parks little league basket ball
- Garfield Teen Life Center (City Parks)
- Medgar Evers Pool (City Parks) Mixed use: school & parks
- Garfield Community Center (City Parks) Mixed use: parks & alt. School(s)
- Field House with restrooms & Ms. Pizza Vender Stand (City Parks)
- Tennis Court (City Parks) Mixed use: school & parks
- Multi-purpose Ball/Band Field (Parks) Mixed use: parks, school, community little league
- Parking Lots (Schools & City) Mixed use: ALL
- Track and Field (School District) Mixed use: school, little league, community

• **Pedestrian and Bicycle Trails (figure 26):**

- Lighting-Signal-Blind Crossing-Others

• **Transportation:**

- Street improvements
- Routes: connections & schedules for staff, students & community to and from home, work sites and Garfield Campus.
- Public Access to Garfield Campus
- Handicap Access to Garfield Campus

- **Streetscape:**
 - Streets
 - Sidewalks
 - Arts in Public Places
 - Internal & external walkways, between the various buildings on campus.

- **Lighting:**
 - Sports: upper & lower fields/tennis court
 - Upgrade Campus Square Block
 - In-between Building Sites, esp. Community Center, Pool, TLC, School surroundings
 - Upgrade & Improve...connecting the Campus via:
 - Lighting: design-control-organization
 - Art in Public Places
 - Signage
 - Lighting
 - Programs and Events (between school & community: see Ms. Pizza)
 - Others

- **Maintenance:**
 - ❖ Organize and institute a systemic/coordinated shared maintenance program for the Campus buildings and grounds with the:
 - School District general maintenance department
 - Parks & Recreation general maintenance department
 - Conservation Core (economic development -- Neighborhood Plan)
 - Neighborhood Plan's "Street Maintenance Program" -- Youth Business Development
 - City of Seattle Youth Work Training Program
 - Garfield Teen Life Center Programs Activities
 - Garfield Community Center Day Care & Summer Camp Gardening Program
 - Area's Senior Citizen Center(s) Day Camp Program Activities
 - Area's Garden Clubs
 - Garfield High School Science/Ecological
 - Others

- **SOUNDS**
 - Vehicular Traffic
 - People (General Public)
 - People (Sports Activities)
 - People (Performing Arts Center Events)
 - 23rd Avenue highway traffic.
 - Others

• **Security:**

- Block Watch surrounding neighbors
- General assigned School District and Parks & Recreation Staff
- Peer Group
- SELF
- African American Veterans Group of Washington State "Walk-About" Project
- Develop/institute (+) organized activities throughout Campus: e.g. Ms. Pizza's Stand
- "Community Police Project"
- Others

• **Next Step:**

- Garfield High School Renovation/Design Team, Garfield District Council, Cherry Street Association come up with design proposal and funding recommendations.
- Present Proposal to the noted levels of process for approval.
- Implementation in designated stages...Results: a new and improved Garfield Campus.

• **Collaborators and/or Funding Sources:**

- Little City Hall East/Central Ted Divina, Coordinator
- Department of Neighborhoods (DON) and City's division of Education
- Department of Construction & Land Use (DCLU)
- Seattle Department of Transportation (SDOT)
- Office of Economic Development (OED)
- Department of Parks & Recreation
- City-King County-State-Arts Commissions
- National Endowment for the Arts/& Humanities
- Washington State Black Heritage Society
- African American Veterans Group of Washington State
- Filipino American Veterans of America
- Jewish American Veterans of America
- Japanese American Veterans of America
- Local Churches, Business, Organizations, Junior Colleges, Colleges, and Universities
- Feeder elementary and middle schools
- Central Area Development Association (CADA)
- Central Area Cultural Arts Commission
- Bill Wrights Technology Center
- Garfield Alumni Association
- Garfield Foundation
- Public & Private Foundations and Individual Donors
- Seattle School Board
- Seattle City Council
- King County Council
- Noted Washington State Departments e.g. Transportation, etc.
- Metro-Sound Transit-Monorail
- Others

Comments-questions-additional information - send to:

Robert Stephens, Jr.

947-27th Ave.

Seattle, WA. 98122

Email: rayews@netzcom.net

Ted Divina

Department of Neighborhoods

Email:

Reference:

- ✓ Garfield High School Renovation Design Team
- ✓ Central Area Neighborhood Action Plans Online
- ✓ Central Area Neighborhood Action Plan Stewardship Committee
- ✓ Central District Council
- ✓ Ted Divina (DON)
- ✓ Garfield Teen Life Center Students & Staff
- ✓ Garfield Community Center Recreational Council
- ✓ Medgar Evers Pool Recreational Council
- ✓ Area Churches
- ✓ Area Business & Organizations
- ✓ "Kids on The Corner"
- ✓ Little Leagues Sports Associations
- ✓ Black Heritage Society of Washington State
- ✓ Central Area Cultural Arts Commission
- ✓ African American Veterans Group of Washington State
- ✓ Douglas/Truth Library
- ✓ Area Hospitals and Health Clinics (V.A., Odessa Brown & Others)
- ✓ Seattle Vocational Institute (SVI)
- ✓ Seattle Community College
- ✓ Seattle University
- ✓ University of Washington
- ✓ Feeder Schools: Elementary & Middle
- ✓ Neighborhood Plans Implementation Advisory Council
- ✓ Seattle City Council
- ✓ Resident & Property Owner since January 1959

UJUNI PRODUCTION © 02/21/04

Damon Burfect
Producer/CEO

16 Track Digital Recording Studio



Independent Interprizes

Pgr. (206) 855-2568

HELP WANTED:
MALE AND FEMALE
RAP AND HIP HOP ARTISTS
LOCALLY OWNED AND
OPERATED RECORDING STUDIO
IN THE GARFIELD COMMUNITY
We have the equipment and phat beats
if you have the energy and talent! For
consideration fax the following
information: name, address, date of birth,
phone number/s, past experience, brief history
and a sample of one of your verses or songs.
FAX NUMBER IS (206) 329-0309
BROKE? Not a problem if you have the Talent!
RAPPERS WANTED!!!

This newsletter was made possible with the generous support and funding of the Washington Insurance Council (WIC) and Seattle Neighborhood Action Program (SNAP).

DEXTER
LIMOUSINE

CRAZY PINOY PROMOTIONS

24 HOUR CELLULAR
206-949-1020

206-860-4052
206-324-8650



Grand Reopening of Garfield Park

continued from page 1

As far back as 1890, African-American families enjoyed watching and playing baseball in this community. Muriel Pollard, a Garfield resident, and graduate of Garfield High School, remembering the 1920's and 1930's,

"When I was a girl we used to play baseball, neighborhood baseball - boys and girls - right out in the middle of the street. It seems like we spent a lot of time playing baseball. There was a colored baseball team and they used to play on Sundays. We used to go over to Garfield Park and they used to play over there, and that was our recreation for Sunday afternoon."

This excerpt was taken from the book, "Sunday Afternoons at Garfield Park," written by Lyle Kenai Wilson.

The fields were completely regraded, resoded, and equipped with more drainage. There will be new covered dugouts, bleachers, and a new scorebaord.

Former players and fans are encouraged to come out to the grand opening-ceremony May 2nd to celebrate this wonderful community asset. If you are interested in volunteering or finding out more, please call Curtis Knopf at 206.322.1522.

Please support our local
businesses

VC COPY AND BUSINESS SERVICES
MARGET CHAPPEL CERRATED WMEE

- COLOR COPIES • DUPLEXING • FAXING • SIGNS
- LARGE COLOR POSTERS • BANNERS • FLYERS
- BUSINESS CARDS • BROCHURES • T-SHIRTS
- LAMINATIONS • HIGH SPEED COPYING

TEL. (206) 328-7022 FAX (206) 328-0346

2202 SO. JACKSON ST. SEATTLE, WA 98144

SEATTLE PUBLIC SCHOOLS SCHOOL DESIGN TEAM (SDT) MEETING AGENDA



Project	<u>Garfield Master Plan</u>
Topic	<u>Garfield block review</u>
Date / Time	<u>Friday, October 1, 2004</u> <u>12:00 to 1:30 p.m.</u>
Place	<u>Seattle Municipal Tower – Room 2750</u>

- **Introductions**
- **Define area of the "superblock" and the District's role in the planning process**
- **Identify portions of the Central Area master plan that relate to the Garfield block**
- **Identify City of Seattle staff members that will be the key decision makers**
- **Outline the agenda for the first community meeting**
 - **Meeting will be held Saturday October 16th from 9am – noon at the Garfield High School Library.**
- **Conclusion**
 - **Follow up meeting to be scheduled for early November.**

**SEATTLE PUBLIC SCHOOLS
BUILDING EXCELLENCE
Garfield High School
PROJECT MISC. MEETING MINUTES**



Block Master Plan / October 1, 2004 / 12:00-1:30 p.m. / Seattle Municipal Tower Room 2750

Attendees:

Name	Representing
Don Gillmore	Seattle Public Schools
Larry Matsuda	Seattle Public Schools Consultant
Jory Phillips	Department of Planning and Development
Alan McWain	Thomas Rengstorf Landscape Architects
Ovid Thompson	Department of Neighborhoods
Scott Kemp	Department of Planning and Development
Nancy Yamamoto	Office of Economic Development
Garry Owens	Department of Neighborhoods
Tom Rengstorf	Thomas Rengstorf Landscape Architects
Tammy Frederick	Seattle Department of Transportation

Name	Representing
Tom Bates	BLRB Architects
Mike Reynolds	BLRB Architects
Kamilah Brown	Councilman Larry Gossett
Vicki Marsten	Seattle Department of Transportation
Tatsuo Nakata	Councilman David Della
Jim Otte	Seattle Public Utilities
Ted Divina	Department of Neighborhoods
Robert Stephens	Community Member
Ralph Rohwer	Heery International
Kathryn Emtman	Heery International

Introduction

Don Gillmore introduced the project team and the described the Garfield project. Earlier this year, the Department of Neighborhoods formed a citizen committee to review zoning variances. The variances granted during the Departure process were:

- Building height
- Property line setback along the north property line
- Parking
- Bus loading

As a condition on the departures listed above, the citizen advisory committee recommended that that project team develop a master plan for the Garfield city block extending from Alder to Cherry between 23rd Avenue and 25th Avenue.

The Director of the Department of Planning and Development has received the Departure report and will incorporate the decision into the Master Use Permit when it is issued early next year.

Garfield High School and the Garfield Park are central to the local community. Currently the District is working with the Parks Department to move the District's property line north to allow for a full size all-weather track and soccer field on the site.

Don reviewed the aerial photograph of the project site referencing the existing property line and the location of the new property line and sports field.

The School District has committed a fee to a landscape architect consultant to develop a master plan for the Garfield Block. The purpose of this meeting is to gather information for city staff members prior to going to the community on October 16, 2004. The District will provide a report and drawing based on the input and conclusions received at this meeting and the community meeting.

Topics for the Block meeting include:

- Pedestrian walkways
- Site/street lighting
- Parking
- Landscaping
- Placement of the buildings
- Outdoor plaza
- On-site bus lane
- Art
- Sidewalks/textured sidewalks?

During the meeting today, the District would like to hear feedback from City staff regarding valuable topics to discuss with the community.

Project Overview

Tom Bates reviewed the plans for Garfield High School emphasizing the following:

- Historic building built in the 1920's
- The Seattle Landmarks Board has land marked the 1923 and 1929 buildings.
- The project will preserve and restore the existing historic building. The design keeps the existing structure with a complete reorganization of the interior to meet the current educational needs.
- Using the current property line, the School District property is 8.9 acres.

Tom reviewed the following upgrades to the site in relationship to site safety:

- The busses currently park and unload students on Alder. The new on-site bus lane along 23rd will accommodate 18 busses on site.
- The design will restore the main north entrance.
- Additional off-site street parking along Alder street will be provided.
- A new community area will be created with the addition of an outdoor plaza at the northwest corner of the site.
- The 1962 gymnasium building will be demolished.
- The new building at the north end of the site will house:
 - A performing arts center
 - Gymnasium and accessory spaces
 - A new Parks Teen Life Center
- An all-weather full size track and field for use by the school and the community
- Additional event parking at Horace Mann will increase to about 50 spaces. A clear and defined pedestrian link between the site and the parking lot will also be created.
- Increasing parking along 25th Avenue
 - Parking already exists on both sides of 25th Avenue between Jefferson and Cherry streets, the District will be replacing the gravel strip on the west side of the street with landscaping.

Central Area Neighborhood Plan

Robert Stephens reviewed the Central Area Plan that was generated by the community and the Department of Neighborhoods in the late 1990's. The Central Area is one of thirty-eight communities with a neighborhood plan. Robert asked the group for collaboration and coordination to implement the plan. The District will provide the master plan for the Garfield block; however it is the city's responsibility to implement it.

Robert asked the group to look at how the high school, teen life center, swimming pool and community center work together along with the master plan's design to preserve the block's rich, cultural heritage of the Central Area. Pictures were displayed to illustrate areas in the Central Area that have incorporated art and heritage into the design.

Robert than reviewed the Central Area neighborhood plan and depicted areas that are related to the Garfield project. To date, the High School project has adhered to the Central Area master plan. Robert urged the City to make this project the pilot project for the City coordination of Master plans.

City Staff Review

The group then went around the room indicating their role in the Garfield Master Plan process:

Name	Representing	Comments
Kamilah Brown	Councilman Larry Gossett	Councilmember Gossett would like to be involved in future meetings with City staff.
Tammy Frederick	Seattle Department of Transportation	The current scheme has been reviewed by SDOT and everything appears to work well. Do not see anything on the list that SDOT would not approve.
Nancy Yamamoto	Office of Economic Development	Would like to be an observer during future meetings and remain on the distribution list.
Ted Divina	Department of Neighborhoods	Attended one Saturday meeting at Garfield related to traffic safety and crime prevention through environmental design and would be interested in attending future meetings.
Gary Owens	Department of Neighborhoods	Gary acknowledged the accomplishments of Robert Stephens who has been involved in promoting community design since 1990. Gary also reviewed the historical significance of the existing football field and requested that the plaque be relocated.
Jory Phillips	Department of Planning and Development	Jory has done work in the past to implement neighborhood plans. Current job is reviewing rezoning applications. Would like to stay involved with this project and see how the plan relates to the surrounding community.
Terry Dunning	Parks Department	Parks is most directly impacted by the master plan for the block and will have representatives at the community meeting on the 16 th . Current issues include: Access, land use and lighting.
Jim Otte	Seattle Public Utilities	Interested in upcoming review meetings
Scott Kemp	Department of Planning and Development	Scott commended the excellent cooperation between the City and the District's Building Excellence Program. Scott will be involved in this process and how it relates to the Master Use Permit.
Tatsuo Nakata	Councilmember David Della	Currently Councilmember Della is working on legislation for Parks. Requested that they remain

		on the distribution list for further meetings.
Ovid Thompson	Department of Neighborhoods	Ovid is the liaison between the City and the School District. His role is to maintain fluid communication between the City and the District.
Vicki Marsten	Seattle Department of Neighborhoods	Will be involved with the master plan and how it relates to street lighting and public safety issues. Vicki is the main contact for these issues.

Additional Clarification:

- o A traffic study of the area has been completed by Heffron Transportation and was included in the Environmental Impact Statement published in September 2004.
- o The mayor has a public safety committee that would be interested in this project. Terry Dunning indicated that he would bring the project to their attention.

Community Meeting Agenda

Tom Rengstorf reviewed the planned agenda for the community meeting on October 16, 2004. He indicated that there will be a number of issues due to the various users of the block. The team will review the existing facilities on the site and determine what characteristics the community is looking for in the master plan. Would the community like to weave a story into the design? There are a lot of various options and issues to address making this a very exciting project.

Additional questions to ask the community:

- o How do people interact with the site?
- o How should the design deal with the existing buildings?
- o Does the community want the top of the pool to become a skate park?
- o Look at the larger area of the neighborhood to tie into the Garfield plan
- o Always have safety and security as the overall theme.

The agenda for the community meeting will be to break up into 3-4 teams to investigate specific areas.

Parks indicated that they are mainly interested in the communities input regarding street amenities such as benches, lighting and art. Currently the parks department is not looking at relocating the ball fields but is reviewing ways to improve the existing facilities on the site.

Kathryn Emtman requested that the City staff review the Neighborhood Plan matrix and send responses to items related to their department via email to kemtman@heery.com.

Additional Comments:

- o The Central Area of Seattle is made up of 7-8 different communities. What happens to the development of the school will be important to the development of all of the surrounding communities.
- o Currently Safeway is building the largest store in the state at the north end of the central area. The new Safeway complex includes both retail and housing.
- o Jory Phillips indicated that there are no known large rezoning applications in process for the area.

City members questioned the process in other communities. Have there been lessons learned from previous high school projects?

Ovid responded that this is the first time the City and School District have had the opportunity to look at ways of developing the community around the high school. There have been other projects with

The organizing theme is "Garfield Bulldogs: Legacy and Promise"
Legacy = past successes
Promise = future achievers

The meeting concluded and attendees were encouraged to attend the community meeting on October 16, 2004 at the Garfield High School library.

Adjournment:

The preceding Minutes are the Construction Manager's interpretation of the items discussed and decisions reached at the above referenced meeting. Any persons desiring to add to or otherwise change the Minutes are asked to put their comments in writing to the Construction Manager not later than **November 8, 2004**; otherwise the Minutes will stand as written.

The preceding Minutes were prepared by Kathryn Emtman, Project Manager 

cc: Attendees

MEETING ATTENDANCE/SIGN IN SHEET

SEATTLE PUBLIC SCHOOLS BEX II



Garfield High School
 Garfield Block Master Plan
 Date: 10/1/04 Time: 12:00 pm

Please indicate your attendance by checking or add to the list:

Attendance	Name	Representation	Phone	Fax No.	Email
<input type="checkbox"/>	TERRY DUNNING	Parks	5844860	233 7035	Terry.Dunning@seattle.spsd.k12.wa.us
<input type="checkbox"/>	JOEY PHILLIPS	PPD Planning Div.	386-9761		joey.phillips@seattle.spsd.k12.wa.us
<input type="checkbox"/>	ALAN MCWAIN	T.R.A.	206.372.6336		amcwain@comcast.net
<input type="checkbox"/>	TOM RENOSTORF	TRA	206 682 7562		trenorstorf@trenorstorf.com
<input type="checkbox"/>	LARRY MATSUUDA	self	296 5829		matsudal@seattle.spsd.k12.wa.us
<input type="checkbox"/>	RAUL ROHWER	Heery	2 587-0473		rrohwer@heery.com
<input type="checkbox"/>	TANNY FREDERICK	SDOT	615-0927		tanny.fredrick@seattle.spsd.k12.wa.us
<input type="checkbox"/>	KATHRYN KEMTMAN	Heery	587-0473		Kemtmann@heery.com
<input type="checkbox"/>	KAMILAH BROWN	Councilman Larry Gossett	296-0010		Kamilah.brown@metrokc.org
<input type="checkbox"/>	TOM BATES	BLRB Archt.	253-627-5599		tbates@blrb.com
<input type="checkbox"/>	MIKE REYNOLDS	BLRB Archt.	()		mreynolds@blrb.com
<input type="checkbox"/>	DON GILLMORE	SPS		252 0647	
<input type="checkbox"/>	VICKI MARSTEN	SDOT	206 684-5197		vicki.marsten@seattle.spsd.k12.wa.us
<input type="checkbox"/>	DUIG THOMPSON	DDN	206-684-0607	FAX 684-8493	duig.thompson@seattle.spsd.k12.wa.us
<input type="checkbox"/>	TATSUO NAKATA	CM David Della	206-684-8806		tatsuo.nakata@seattle.spsd.k12.wa.us
<input type="checkbox"/>	SCOTT KEMP	PPD			scott.kemp@seattle.gov
<input type="checkbox"/>	JUNI OTTE	Seattle Public Utilities	206-684-0153		juni.otte@seattle.gov
<input type="checkbox"/>	NANUK YAMAMOTO	UED	684-5289		NANUK.YAMAMOTO@seattle.spsd.k12.wa.us
<input type="checkbox"/>	TED DIVINA	DON	206 233-7257		Ted.divina@seattle.spsd.k12.wa.us
<input type="checkbox"/>	GARRY OWENS	DON	206 684-0718		Garry.Owens@seattle.spsd.k12.wa.us
<input type="checkbox"/>	ROBERT STEPHENS	COMMUNITY			
<input type="checkbox"/>					
<input type="checkbox"/>					
<input type="checkbox"/>					

Community Meeting Minutes

Garfield High School

October 16, 2004 / 9:00 a.m. / Garfield High School

1. Introductions:

- A. The introduction provided by Don Gillmore explained the purpose of the meeting and general information about the Garfield High School project. The goal of this meeting was to discuss issues outside the property line of the high school, focusing on the super block concerns. Information collected today will be studied and will help direct the evolution of the project and future development of surrounding community and business properties along the 23rd street corridor.

2. General Discussion:

A. Garfield High School Program;

1. Don and Tom Rengstorf briefly discussed the orientation of the Garfield High School project, including surrounding parking, sports field, performance hall, gymnasium, and new Teen Life Center. Parking around the site has been increased. The sports field could be either natural grass or all weather. An all-weather alternate will be created during the contract bid buyout. Additionally, the design relocates the pedestrian congestion from the south side to the north side of site, back to the main entrance. There will also be a walkway added between the sports field and addition to connect east and west traffic from the parking lot off of 25th. This walkway will also decrease the amount of traffic across the sports field. The length of the addition is going to decrease with the relocation of program activities under the gymnasium, thus increasing the parking at the east.
2. Ovid Thompson inquired if there were comments from the Landmarks Architectural Review Committee (ARC) meeting held on Friday. The ARC stated they felt this was the best project done so far by SPS. The addition did not interfere with the existing building. The project is scheduled to go to the Landmarks Preservation Board on November 17, 2004 for Preliminary Approval.

B. Garfield Campus Superblock, Master Plan Matrix;

1. Tom introduced the matrix handout and walked through the highlights before going over each category in detail. The matrix covers critical categories: Access and Safety, Character, Street-Scape, and Adjacent Areas (in regards to surrounding streets and potential pathways). Tom's main focus was to determine the vision of the neighborhood and how it affects the project.
2. **Access and Safety, Primary Access.** With the future development of commercial property, multi-family housing/mixed use, are there concerns with pathways and Primary Access?

- a. 23rd and Cherry

- i. This area is prime for commercial and multi-family housing along the 23rd street corridor. There were no concerns voiced in this area. Potential development has been discussed but there are no current plans. Ovid stated that if neighbors have issues with the development, they can make comments to the City. Light rail was raised but this development will be further south. There has been talk about a Metro connection to the light rail from this location.
- b. 23rd and Jefferson
- i. This is a main student crossing during the lunch period. Students congregate at Ezell's causing congestion at this corner. Ezell's is planning to develop this property per Don Gillmore. The goal here is to understand what the neighborhood and business developers desire. Per Ovid, there is a Cherry Street Business Group which should be queried for input.
 - ii. Glen Hubbard questioned that with the additional parking adjacent to Jefferson, is there a way to change the timing of the traffic lights? This has been discussed with SDOT and would be difficult as the traffic lights are timed along 23rd.
 - iii. Tom asked if either of the neighbors used busing? Yes. The bus stop at this corner is a major feature and potential cause of congestion. This is a main connection to the downtown area. Would moving the stop be good or bad? Many of the patrons of the pool and students use this bus stop. It was suggested to leave the bus stop in its current location.
- c. 23rd and Alder
- i. The light at this corner is a pedestrian light to cross 23rd. There is no traffic light on Alder, just a stop sign. Per the neighbors this is a dangerous spot due to fast-traveling vehicles coming north on 23rd. There is limited sight line due to the hill and accessing 23rd from Alder is almost impossible. The group suggested that a four-way traffic light be installed.
- d. Pathway Between Horace and Garfield
- i. Where are the pedestrians crossing? There is a mid-block crossing that does not line up with the proposed path. Should the crossing include a curb or street-crossing bulb? Neighbors thought this was a good idea. The mid-block crossing should be relocated to align with the proposed pathway including a bulb. Concern was raised with crosswalk stripping maintenance. New crosswalks included in the construction project will be done by the contractor but typical maintenance is done by SDOT.
- e. Cherry Street between 23rd and 25th
- i. Any future development? Nothing scheduled but with the 23rd Street corridor development, raised brick crossings could be an option.

3. Access and Safety: Secondary Access

a. Accessible paths

- i. There are paths on campus that run east/west and north/south. The sidewalk at the north currently has no stairs. The new design will indeed have stairs. Suggestion to look at adding a ramp or switch back so there is bike/ADA access along the north side. Architect to look at space between ball field and addition to see what can fit.

b. 25th and Jefferson

- i. Neighbors raised concern with speeding automobiles along 25th. Suggested installing an island to slow traffic. The street will have parking on both sides that should slow down traffic. SDOT prefers to allow parking on both sides of a residential street instead of islands. There has been talk from SDOT to make this a one-way street. Per the neighbors, one-way traffic to the south would be preferable. There should not be any bus traffic on this street as buses have been relocated to 23rd.
- ii. Robert Stephens suggested that 25th should be a main pedestrian route. The sidewalks should be fixed. These sidewalk restorations should occur between Yesler to Cherry and Alder to MLK.

4. Lighting;

a. Lighting along Horace/Garfield Path

- i. Primary lighting along main path, what kind? Thirteen to 15 foot poles along path. Parks Department to review what type of lights. Bollard lights have a higher tendency for damage and graffiti.
- ii. Question was raised on who looks at lighting? The project team will take the information provided during this meeting and present solutions at the next meeting.

b. Lighting at Garfield

- i. Lighting will occur at building and along paths. The lights will be directed at paths to control light pollution. Security lighting will also be considered. Will motion sensors be installed? Motion sensors are typically not installed but the District is able to schedule lighting similar to the Parks Department's for activities in the evening.
- ii. Neighbor also suggested to limb trees to maximize lighting and site lines. No low shrubs. Trees limbed to six to eight feet.
- iii. Parking lots will receive high bay lighting. Light is controlled to minimize light pollution.

5. Traffic Controls and Calming

- a. Due to 23rd's level of traffic and speed of traffic a suggestion was made to allow off-peak parking to slow traffic.
- b. Student stated that speeding occurs on Alder Street and this is a hazard to the students. With the main congestion point being relocated to the north entry this hazard should be decreased. Additionally, angled parking along Alder should help slow down traffic. Suggestion to install raised brick crossings at Alder and 23rd and 24th would significantly help issue.
- c. Suggestion was made that around the super block sound devices for the seeing impaired should be installed.

6. Character

- a. Culture and History
 - i. The sports field was the first Negro Sports Field. There is a plaque on the field. This should be moved to a more prominent location. Potentially, install a larger sign specifying the historic significance. Per Robert, Garfield is the most integrated school in District.
- b. Art
 - i. There are many art features throughout the campus. Memorial for Peace located at the south side is important. Robert suggested other art features such as a Native American piece, a modern feature dedicated to the armed service, art along the path to Horace. Handout was presented to group named the Legacy of Promise that defines potential artwork locations at Garfield. Having student based art at the school and campus would be positive for the neighborhood.
- c. City Park
 - i. The new Garfield Sports Field will be programmed for football, soccer and track. The field will be used for both practice and games. Arrangements with the Parks Department have been established to allow the community or Parks-established sports leagues to use the field. The field will not be lighted except minimal lighting for pedestrian traffic. No dogs will be allowed on the field.
 - ii. Future plans for the City Park? No major plans have been scheduled for the next five to seven years per Royal Alley-Barnes. Annual maintenance will occur to maintain the fields. The Parks Department is in support of the Horace/Garfield path or promenade. Large walking spaces are ideal but there are some restrictions. There should be no benches longer than three feet and no covered areas. These features are attractive to bad elements.
 - iii. The north path should be shifted to meet the corner of 25th and Jefferson. This will be reviewed as the parking lot area is being revised due to the addition length change.

- iv. Neighbors requested that trees be installed along 25th to buffer between the school/Parks activities. Due to difficulty with planting trees in the right of way, project team will look at shifting the sports field and adding trees on school property. The fence along the sports field is a low fence four-foot-tall fence. Neighbors agreed that a black colored fence is preferable.

7. Streetscape

a. Paving Features

- i. Special paving at potential commercial development would be aesthetically pleasing.
- ii. Neighbors would like to see decorative paving, colored, textured and/or markings. Suggestion to install paw prints or features in paving. Royal raised concern that recessed markings can collect water and debris and become a walking hazard or maintenance issue.
- iii. Furniture is acceptable if it follows certain size guidelines and locations. Trash containers should also be installed along promenade.
- iv. Skateboarding at the pool. This activity should be encouraged. Space could be enhanced for this activity. Concern was raised with damage to railings. Royal suggested keeping the length of railings to a minimum so the boarders will not grind on them. Other areas of concern should receive anti-skateboard bumps. Another concern raised was use during pool hours. Skaters have been cognizant of pool activities and refrain from boarding. Hours need to be posted to control skateboard activities.

8. Landscaping

a. Relocation of Landscaping

- i. The memorial rhododendrons will be relocated. Area still in discussion. The student garden at the south will need to be relocated around the corner to the east side of the building.
- ii. After further discussion of the sports field the neighbors raised a concern with the tree at the corner of 25th and Alder. The tree is currently shown to be removed to get the program space at the sports field. The neighbors urge the design team to keep the tree. Team to look at shifting southeast walls of field to protect the tree.

9. Signage

a. Sports Field / Parks Scoreboard

- i. There is a scoreboard at the southeast corner of the sports field. Due to the concern of the tree and shifting of wall the neighbors suggested relocating the board to the wall of the addition. This would eliminate the need of a structure of hold the sign.

- ii. At the north side of the Teen Life Center there will be a scoreboard for the Parks Department. This signage is used for baseball scoring. Neighbors felt this sign was still useful and should be installed.

b. Other Signage

- i. The group discussed signage at the Garfield/Horace pathway. Directional signage would be helpful along the pathway.

10. Block Development: Robert Stephens

a. General Discussion

- i. Robert presented some of the history of the Garfield campus and the importance of the existing Parks sports fields. He discussed the importance of creating this path across the campus connecting Garfield High School and Horace Mann. With the continued development along the 23rd corridor, one of the important features is the integral role of art. Robert also explained different features that could be used within the campus and surrounding commercial development.

3. Concerns/Comments:

A. Miscellaneous Comments

Greg Cummins raised concern with graffiti along the north side of the addition. Don stated that the material used, split-faced concrete masonry units will be installed nine feet tall with an anti-graffiti coating. This type of masonry block deters graffiti as it gives a very poor surface to mark.

This meeting was adjourned at approximately 1:15 p.m.

The preceding Minutes are the Construction Manager's interpretation of the items discussed and decisions reached at the above referenced meeting. Any persons desiring to add to or otherwise change the Minutes are asked to put their comments in writing to the Construction Manager no later than November 10, 2004, otherwise the Minutes will stand as written.

The Preceding Minutes were prepared by: Steven Moore.

927 

**SEATTLE PUBLIC SCHOOLS
BUILDING EXCELLENCE
Garfield High School
BLOCK MASTER PLAN MEETING MINUTES**

Meeting No. 2/ February 11, 2005 /1:30 pm/ Garfield High School

Attendees:

Name	Representing	Name	Representing
Dave Smith	Seattle City Light	Mike Reynolds	BLRB
JoAnn Cowan	Seattle Parks	Gary Owens	Department of Neighborhoods
Ted Divina	Department of Neighborhoods	Cliff Louie	Department of Neighborhoods
Robert Stowers	Seattle Parks	Kim Baker	Department of Arts and Cultural Affairs
Lorraine Pai	Thomas Rengstorf Landscape Architects	Robert Stephens, Jr.	Garfield Design Team
Ovid Thompson	Department of Neighborhoods	Don Gillmore	Seattle School District
Vicki Marsten	Department of Transportation	Tatsuo Nakata	Councilmember David Della
Nancy Yamaoto	Office of Economic Development	Scott Kemp	Dept. of Planning and Development
Kathryn Emtman	Heery International		

Introductions: Don Gillmore

- Garfield High School construction budget is around \$50 million for the historic renovation and new addition.
 - Includes demolition and reconstruction of a new Parks Teen Life Center
- The new gymnasium will be located slightly to the north.
 - Property trade with Parks Department is ongoing
- To date the project has had:
 - 10 community meetings
 - Numerous city meetings
- 27 School Design Team meetings
 - School design team members include parents, teachers, community members, and students.

High school project has an effect on the entire Garfield block.

Master Plan: Make the Block Congruous

Consistent methodology for the block in terms of:

- Lights
- Benches
- Pathways

Want the community to feel integrated with the High School and Park.

Report was a requirement for the Master Use Permit. The document develops a road map of how to improve the area in various ways:

- o Art, streetscape, consistency

Money:

The District funded the plan and will also improve a pathway location between the school and Horace Mann.

Parking lot at NEVA/Horace Mann will be used for major events such as:

- o Basketball games
- o Performing Art Center Functions

Focus on visibility, increasing site safety, and security lighting.

Objective today:

- Gather input from the City.
- Next Community meeting: March 10, 2005 at 6:30 p.m.
- District is not committing to funding all the improvements to the Park.

Plan Discussion: Lorraine Pai

- Reviewed aerial photo
- Review links between the high school and Horace Mann
 - o Consistency in landscape design areas
- Used documents and research provided by Robert Stephens
- Precedent for art projects
 - o Robert displayed art boards

Input from Community:

Transportation Issues

- Heavy traffic concerns
- Traffic is too fast along Alder and Cherry Streets
- Suggestions for street calming
- Discussion of 25th Avenue
 - o One-way going south
- Bus drop-off area will be accessed from 23rd Avenue

The high school project design will move the front door of the school from the south to the north. An outdoor plaza will be developed at the north end to provide access to all the main entrances including the historic main entrance. Busses will no longer be double parking along Alder.

Q: Will the outdoor plaza affect traffic along 23rd Avenue?

A: No, the plaza is located off of the street.

Q: Review is still needed for the HVAC system at the pool-how will the busses affect the air intake?

A: The District will work with Parks to develop a solution.

Review of the Report

1. Project background
2. Review the sub areas identified in the plan
3. Landscape elements proposed

Special Paving: Two Functions

1. Slows down traffic
2. Aesthetic improvements

Format

Incorporating comments from the community and providing recommendations in regards to:

- Site furnishings
- Lighting
 - Want visible sight lights to the block with low landscaping.
- Paving

Robert Stephens:

Police precinct did a walk thru of the site. The trees on 25th Avenue need to be trimmed to allow visual access. Suggested ground lighting be added to the southeast corner (similar to the lighting in the northwest corner).

Q: Are raised crosswalks a good idea for an arterial?

A: They are actually flush with the street and have a pattern. There are several along Union and 12th Avenue and James Street.

Arts and Culture:

- Art gateways
- Paving tiles made by students and community members
- Incorporate Garfield history into the art design
- Use art to celebrate Central Area History

Recommendation

- Add lighting at Horace Mann
- Remove fence
- Signage throughout the site
- Issue of field lighting and pathway width

Two schemes: Scheme 2

- Stronger connection with Horace Mann
- More construction
- Opening diagonal connection in the street
 - Would need to work around infrastructure and utilities

Q: Which scheme illustrates the existing mid-block crosswalk?

A: Scheme 1 identifies the current location of the mid-block crosswalk.

Robert indicated Scheme 2 is the community's preference.

City Comments:

Vicki Marsten, SDOT:

Plan mostly deals with Parks and there is not much in the City right of way.

- Will want to review lighting
- If crosswalk is flush with street level should be identified as a textured crosswalk

Q: Is there anyone working with the City of Seattle Neighborhoods Group Crime Prevention through Environmental Design?

A: Yes, a member of the group has been contacted.

Kathryn indicated that the team needs input from SDOT regarding turning 25th into a one way street prior to the community meeting on March 10th.

City Light and SDOT input will be limited to the perimeter of the block.

25th Avenue becomes a problem street. The trees are loved by the community, but they block the lights.

Having clear community input regarding 25th Avenue would be good knowledge for the City Agencies.

SDOT and City Light

- Ball lighting/pedestrian lights along 23rd Avenue

The City has a small capital fund for pedestrian lighting. City Light funds are administered by SDOT via a recommendation from Department of Neighborhoods (DON).

DON- Gathers projects

SDOT-Prioritizes

City Light-Provides the funding based on other pressures from the City

Q: Is there an inventory of lighting?

A: Yes, the City Light has a vendor that works with a particular manufacturer that offers a variety of fixtures.

- 12th Avenue by Seattle University-series of new pedestrian fixtures are an example of the City Light standard.

Ted Divina, Department of Neighborhoods: Clarified that the community members are not in favor of the trees, whereas others want more trees.

Gary Owens, Department of Neighborhoods: DON has a tree fund which provides trees for citizens to plant. Unfortunately, the funding has been cut.

Kathryn Emtman stated that the project will upgrade the water line along 25th Ave. between Cherry and Jefferson St. this summer. As part of that work, the District will replace half of the street, the curb, landscaping strip and sidewalk. Low maintenance trees can be purchased for 25th Ave. to replace the existing trees. The work will take place after the festival and before school starts in August.

Cliff Louie, Department of Neighborhoods:

- Funding-need preliminary estimate to give people an idea of what it will cost
- What are the community priorities?
- Need a preferred alternate
- The overall plan will take some time

JoAnn Cowan, Seattle Parks Department:

Plan is consistent with comments heard at community meeting. Parks has their own lighting and landscape standards. JoAnn stated Parks can probably work with Plan recommendations. Verification is needed so everything in the plan is acceptable to the City prior to the Community meeting on March 10, 2005.

Robert Stephens, Community Member:

Robert indicated existing ball field light poles are deteriorating and will need some work done to prevent them from becoming a safety hazard.

City people look at this with the eye of how portions of this plan could be funded.

Gary Owens, Department of Neighborhoods:

Passed out information regarding historic connotation of the field. The examples included:

- The Negro Baseball League (1911-1957)
- Book: Sunday Afternoons at Garfield

Gary expressed thought regarding how the entire project has huge legacy concerns. Garfield is a place where there is a lot of inter-racial awareness. The neighborhood is an issue for the Mayor and the City of Seattle.

This will be a long range project that will identify community history. The art at Garfield could be used to address and integrate the rich community history.

The underlying theme of Garfield Design is "*Legacy and Promise.*" The theme revolves around remembering the past but leaving opportunities open for the future.

The Garfield Project provides a great opportunity for the Central Area Business District. Pedestrian traffic will be increased as a result of the project.

Report on the Crime Prevention through Environmental Design Group:

- Block watches in the neighborhood
- Cherry Street Association-hasn't convened since May 2004, but they are coming back into play soon
- 25th and Alder- wanted lighting because of public safety concerns

Scott Kemp, Department of Planning and Development:

Thanked the School District and their consultants for creating the report for the block master plan. He stated that it is a great plan that creates a vision that can be used to actually make it happen.

Discussion:

Robert reiterated what Cliff stated regarding the need to know the cost in order to generate the funds.

The connection between Horace Mann and PAC seems to be a lot of money and maintenance for the future.

- The Departure required enhancement of the pathway to allow pedestrian traffic to travel between Horace Mann and the PAC. If there is an increase in cost, the benefits will be evaluated.

Q: Will the busses coming off of the plaza cause a new headache on 23rd Avenue?

A: Don Gillmore gave an example of how this has worked at West Seattle High School.

Robert Stowers will give info on lighting.

Kim Baker, Department of Arts and Cultural Affairs:

Stated that she liked how art is incorporated into the plan. Resources and office funding are not currently dedicated to the project. Office funding can still be a resource for artist information and references. Art will be a key factor that will act as a functional resource.

Q: Are there grants for art in public places?

A: The office does offer grants.

Q: Who will run and maintain the art?

A: Material selection will be important. Starbucks and Safeway should be considered for monetary contributions.

Q: Artwork and permitting. Who does the permitting?

A: There are various agencies that review the artwork.

The design team requested a copy of the joint-use agreement with Garfield. Robert Stowers will provide a copy.

Adjournment:

The preceding Minutes are the Construction Manager's interpretation of the items discussed and decisions reached at the above referenced meeting. Any persons desiring to add to or otherwise change the Minutes are asked to put their comments in writing to the Construction Manager not later than February 24, 2005; otherwise the Minutes will stand as written.

The preceding Minutes were prepared by Kathryn Emtman, Project Manager

cc: Attendees



MEETING ATTENDANCE/SIGN IN SHEET

SEATTLE PUBLIC SCHOOLS BEX II




Garfield High School
 Block Master Plan Meeting No. 02
 Date: February 11, 2005 Time: 1:30 p.m.

Please indicate your attendance by checking or add to the list:

Attendance	Name	Organization	Phone	Address	E-mail
<input checked="" type="checkbox"/>	Dave Smith	Seattle City Light			dave.smith@ci.seattle.wa.us
<input checked="" type="checkbox"/>	Mike Reynolds	BLRB Architects			mreynolds@blrb.com
<input checked="" type="checkbox"/>	JoAnn Cowan	Seattle Parks			joann.cowan@seattle.gov
<input checked="" type="checkbox"/>	Garry Owens	Department of Neighborhoods			garry.owens@seattle.gov
<input checked="" type="checkbox"/>	Ted Divina	Department of Neighborhoods			ted.divina@seattle.gov
<input checked="" type="checkbox"/>	Cliff Louie	Department of Neighborhoods			
<input checked="" type="checkbox"/>	Robert E. Stowers	Seattle Parks			robert.stowers@seattle.gov
<input checked="" type="checkbox"/>	Kim Baker	Department of Arts and Cultural Affairs			kim.baker@seattle.gov
<input checked="" type="checkbox"/>	Lorraine Pai	Thomas Rengstorf Landscape Architects			lpai@tregstorf.com
<input checked="" type="checkbox"/>	Robert Stephens	Garfield Design Team			aaqgwse@netzero.com
<input checked="" type="checkbox"/>	Ovid Thompson	Department of Neighborhoods			ovid.thompson@seattle.org
<input checked="" type="checkbox"/>	Don Gillmore	Seattle School District			dgillmore@seattleschools.org
<input checked="" type="checkbox"/>	Vicki Marsten	SDOT			vicki.marsten@seattle.gov
<input checked="" type="checkbox"/>	Tatsuo Nakata	Representing Councilmember David Della			tatsuo.nakata@seattle.gov
<input checked="" type="checkbox"/>	Nancy Yamaoto	Office of Economic Development			
<input checked="" type="checkbox"/>	Scott Kemp	Department of Planning and Development			scott.kemp@seattle.gov
<input type="checkbox"/>					
<input type="checkbox"/>					
<input type="checkbox"/>					
<input type="checkbox"/>					
<input type="checkbox"/>					
<input type="checkbox"/>					

1041



**SEATTLE PUBLIC SCHOOLS
BUILDING EXCELLENCE
GARFIELD COMMUNITY SUPER BLOCK MEETING**

MEETING / March 10, 2005 / 6:30 p.m. / Garfield High School

Attendees:

Name	Representing	Abbr.	Name	Representing	Abbr.
Greg Cummins	Neighbor	GC	Joanna Cullen	Design Team	JC
Malvolia Joseph	Neighbor	MJ	Wanda Allen	Neighbor	WA
Ovid Thompson	Department of Neighborhoods	OT	Janelle Myron	Neighbor	JM
Eric Ames	Neighbor	EA	Gary Owens	Department of Neighborhoods	GO
Mike Reynolds	BLRB	MR	Tom Bates	BLRB	TB
Thomas Rengstorf	TRA Landscape Architects	TR	Lorraine Pai	TRA Landscape Architects	LP
Don Gillmore	SSD	DG	Larry Matsuda	SSD Consultant	LM
Robert Stowers	Parks Department	RS	Mark Guy	GHS Parent	MG
Robert Stephens, Jr.	GHS Superblock	RS	Herbert Weaver	GHS Community	HW
Dara Lehman	Neighbor	DL	Mary Bass	School Board	MB
Cliff Louie	Department of Neighborhoods	CL	Don Lewis	GHS Community	DL
Sanford Petersky	GHS Golden Grads	SP	Janet Woodward	Site Design Committee	JW
Kathryn Emtman	Heery International	KE			

Introduction: Don Gillmore, Seattle Public Schools

Don Gillmore welcomed the community to the Garfield master block plan review. As part of the City of Seattle Departure process, it was requested that the District complete a master block plan that the community could then implement. As part of this project, the District will provide new lights and signage along the existing pathway between Garfield High School and the Garfield Community Center.

Plan Background: Robert Stephens, Community Member

Robert Stephens explained the background of community neighborhood plans. In 1998 the City began a task force to create a plan for every Seattle neighborhood. There were 38 community plans drafted and the Garfield project is the only project to adhere to the Central Area Plan. The plan created by the District doesn't fund anything above and beyond the improved lighting and signage. The community will need to work with the City of Seattle to look for funding and grant money.

Presentation of Master Block Plan: Lorraine Pai, Thomas Rengstorf Associates

Lorraine Pai works for the landscape architecture firm that drafted the master block plan for Garfield. She presented the contents of the plan to the community. The Garfield master block is bounded on the west by 23rd Avenue, on the east by 25th Avenue, on the south by E. Alder Street, and on the north by E. Cherry Street. There are multiple ownerships within the master block, including the District, Seattle Parks, and the City of Seattle.

To date there have been two community meetings related to the block master plan:

- February 21, 2004
- October 16, 2004

The main goal of the plan for the District is to determine the connection between the Horace Mann overflow parking lot and the new Garfield High School facilities. In addition, the plan specifies examples of the following:

- Art
- Paving (i.e., the walkway could be defined as a "legacy walk" and could tell a story)
- Lighting
- Landscaping and plantings
- Safety issues

Lorraine then reviewed the two options listed in the plan:

Option A: Mid-block crosswalk

Option B: Diagonal crosswalk at 24th Avenue

Community Comments:

C: Like the large trees along 25th and would like to see them remain.

C: Want people to be safe crossing from Horace Mann to the Garfield campus.

Q: What are the costs associated with each option? Which option would be the most cost-effective solution?

A: The District is obligated to provide a path between Horace Mann and the Garfield campus. The cost of each option can be evaluated; however, the District would like to know the community's preference before pricing each option.

Q: Why not direct people along 25th?

A: Multiple routes could be used.

C: Want to make the main entrance of the new addition and plaza accessible.

Q: What is the District going to do with Horace Mann and the Nova School?

A: The function of the building is irrelevant to parking.

Cliff Louie with the City of Seattle indicated the following:

The City of Seattle would be in favor of the crossing at 24th Avenue to avoid vehicle/pedestrian conflicts mid-block.

1. Concerned about the diagonal crossing at 24th being too close to the driveway entrance to the community center.

2. People tend to take shortcuts. The mid-block crosswalk would be the shortest route, and this is what community members would prefer.
3. Biggest concern is safety. At 24th Avenue, people in the crosswalk would be dealing with traffic in three directions vs. two directions at the mid-block location.
4. Have seen kids hit at 24th and Cherry; a crosswalk at 24th would not help the situation.
5. From a safety standpoint, the mid-block crossing is the best alternative.
6. From a budget standpoint, the mid-block crossing is more feasible because it already exists. Enhancements such as ground lighting could be added to the existing crosswalk.
7. Feel that people are more likely to stop at the mid-block crosswalk.
8. There is too short of a distance between 23rd and 24th, and the lanes narrow from two to one.
9. Concerned that the community center parking lot would be used for Garfield events if the pathway is enhanced.
10. Like the direct line of site in the diagonal plan because it would encourage people to park in the Nova lot and not the community center parking lot.
11. As people are turning off of the street and into the parking lot, they are going fast to get out of the street. This creates a pedestrian conflict if the pathway is too close to the driveway entrance.
12. With the light show in the ground and a change in the surface, it really makes a difference for the crosswalk. This has worked well at Seattle University.
13. I am more worried about kids crossing 25th. This is why I am all for the mid-block crossing. Children really use the mid-block crossing, and I would be concerned about kids at the community center running across Cherry at 24th.
14. Mid-block crossing keeps traffic turning onto 24th to park at Nova.
15. The strip between 23rd and 24th on Cherry narrows from two lanes to one. I have been rear ended at this location when stopping to turn left onto 24th.

In summary, Don Gillmore clarified the following:

- The community is in favor of adding enhancements to the existing mid-block crossing and not installing a crosswalk at 24th and Cherry.
- The District will work with the community to add signage to the existing path.

Additional Items:

25th Avenue a one-way street?

The design team asked the community for comments regarding converting 25th Avenue into a one way going north, as stated in the Central Area plan.

- May decrease the amount of traffic but could also increase the speed of traffic.

The team clarified that SDOT's stance is that the more congestion, the lower the speed. Currently, it is legal to park on both sides of 25th Avenue north of Jefferson, but it is not legal to drive over the curb and park in the gravel strip.

1. The concern is the speed of traffic along 25th.
2. Parking on both sides will slow traffic down in a two-way direction.

The design team indicated that the neighbors on 25th could contact SDOT to discuss ways of slowing the traffic down at this time.

Cherry Street Business Plan

Gary Owens informed the group of a business plan in place for a building to be located at 24th and Cherry. This new development could affect the crosswalks on Cherry.

Water Line Replacement Project

This summer, the District will be improving the water line along 25th Avenue between Jefferson and Cherry. This will cause an inconvenience to the neighborhood while the contractor is trenching the street to install the new line. More information and a project schedule will be distributed to the neighbors once the plans are finalized.

The project will mean an upgrade to the City's fire line capacity, which will improve the condition in the area surrounding Garfield High School.

Master Block Plan Summary

The final implementation of the total plan will be a community-driven project, and the City of Seattle would like to support them. The idea of the plan is to make the block coherent.

Written comments can be submitted to:
Kathryn Emtman, Garfield Project Manager
Heery International, Inc.
1011 Western Avenue Suite 706
Seattle, WA 98104
kemtman@heery.com

This meeting was adjourned at approximately 8:00 p.m.

The preceding Minutes are the Construction Manager's interpretation of the items discussed and decisions reached at the above referenced meeting. Any persons desiring to add to or otherwise change the Minutes are asked to put their comments in writing to the Construction Manager no later than **April 4, 2005** otherwise the Minutes will stand as written.

The Preceding Minutes were prepared by: Kathryn Emtman?

MEETING ATTENDANCE/SIGN IN SHEET

SEATTLE PUBLIC SCHOOLS BEX II

Garfield High School Community Meeting
Master Block Plan Review

Date: March 10, 2005 Time: 6:30 pm Location: Garfield High School



Please indicate your attendance by checking or add to the list:

	Name/Title	Representation	Phone	Fax No	Address and E-mail
<input type="checkbox"/>	Greg Cummins	neighbor	206 726 1390		502 25th
<input type="checkbox"/>	Joanna Cullen	Design Team	206 329 8514		975 21st 98122 jfcullen@duzelo.com
<input type="checkbox"/>	MAKOLIA JOSEPH	Wanda Allen			222-25th Ave
<input type="checkbox"/>	Wanda Allen	neighbor			222-25th Ave
<input type="checkbox"/>	Ouid Thompson	city DDW	206-4601		OUID.THOMPSON@SEATTLE.GOV
<input type="checkbox"/>	Janelle Myron	neighbor	762-7596		346 25th Ave
<input type="checkbox"/>	Eric Ames	neighbor			↓ eric@glewmsound.com

MEETING ATTENDANCE/SIGN IN SHEET

SEATTLE PUBLIC SCHOOLS BEX II

Garfield High School Community Meeting

Master Block Plan Review

Date: March 10, 2005 Time: 6:30 pm Location: Garfield High School



Please indicate your attendance by checking or add to the list:

	Name/Title	Representing	Phone	Fax No.	Address and e-mail
<input type="checkbox"/>	GARRY OWENS	City of SEATTLE/ NEIGHBORHOODS	684-0718		
<input type="checkbox"/>					
<input type="checkbox"/>					
<input type="checkbox"/>					
<input type="checkbox"/>					
<input type="checkbox"/>					
<input type="checkbox"/>					

MEETING ATTENDANCE/SIGN IN SHEET

SEATTLE PUBLIC SCHOOLS BEX II



Garfield High School Community Meeting
 Master Block Plan Review

Date: March 10, 2005 Time: 6:30 pm Location: Garfield High School

Please indicate your attendance by checking or add to the list:

	Name/Title	Representing	Phone	Fax	Address and E-mail
<input type="checkbox"/>	MIKE REYNOLDS	BURB			
<input type="checkbox"/>	TOM BATES	BURB			
<input type="checkbox"/>	THOMAS RENGSTORF	TRA			
<input type="checkbox"/>	LORRAINE PAT	TRA			
<input type="checkbox"/>	KATHRYN EMTMAN	HEERY			
<input type="checkbox"/>	DON GILLMORE	SSD			
<input type="checkbox"/>	Lamy Matsuda	SSD Consultant			

MEETING ATTENDANCE/SIGN IN SHEET

SEATTLE PUBLIC SCHOOLS BEX II

Garfield High School Community Meeting

Master Block Plan Review

Date: March 10, 2005 Time: 6:30 pm Location: Garfield High School



Please indicate your attendance by checking or add to the list:

	Name/Title	Representing	Phone	Fax No.	Address and e-mail
<input type="checkbox"/>	Robert Stowers	City Parks RAC	204 684 0796		
<input type="checkbox"/>	MARK GUY	Forest H.S.	206 282 1793		
<input type="checkbox"/>					
<input type="checkbox"/>					
<input type="checkbox"/>					
<input type="checkbox"/>					
<input type="checkbox"/>					

MEETING ATTENDANCE/SIGN IN SHEET

SEATTLE PUBLIC SCHOOLS BEX II

Garfield High School Community Meeting

Master Block Plan Review

Date: March 10, 2005 Time: 6:30 pm Location: Garfield High School



Please indicate your attendance by checking or add to the list:

<input type="checkbox"/>	Individual Name/Title	Representation	Phone No.	Home No.	Address and E-mail
<input type="checkbox"/>	Robert Stephens, Sr	Garfield Super Block			
<input type="checkbox"/>	HERBERT WEAVER	GARFIELD COMMUNITY			
<input type="checkbox"/>	Larry Matsuda	Self			
<input type="checkbox"/>	DARA LEHMAN	NEIGHBOR			328 25th AVE
<input type="checkbox"/>	Marta P. Pias	Sch Bnd			
<input type="checkbox"/>					
<input type="checkbox"/>					

MEETING ATTENDANCE/SIGN IN SHEET

SEATTLE PUBLIC SCHOOLS BEX II

Garfield High School Community Meeting

Master Block Plan Review

Date: March 10, 2005 Time: 6:30 pm Location: Garfield High School



Please indicate your attendance by checking or add to the list:

<input type="checkbox"/>	Individual Name/Title	Representing	Phone	Fax No.	Address and E-mail
<input type="checkbox"/>	Cliff Louie DON				
<input type="checkbox"/>	Don Lewis				cheek99@hotmail.com
<input type="checkbox"/>	SANFORD PETERSKY 43	GARFIELD GOLDEN GRADS			8408-SE, 34TH PL MERCER IS, WA. HEGOFU@AOL.COM
<input type="checkbox"/>	Janet Woodward	Site Design Committee			GHS Library
<input type="checkbox"/>					
<input type="checkbox"/>					
<input type="checkbox"/>					

Garfield Master Plan: Subprojects Delineation

I.

Pedestrian Access and Safety

- Upgrade existing crosswalk at 23rd and Jefferson
Many students use this crosswalk to and from school particularly during lunch hour to Ezell's. Further study is needed with business owners, the school and the community for need and appropriate design.
Lead: SPS
Startup:
- 4-way traffic light at 23rd and Alder
Neighbors say this is a dangerous intersection if you exit Alder to 23rd. Traffic on 23rd moves downhill making it difficult to judge when it is safe to cross or turn onto 23rd.
Lead: SDOT/SPS
Startup:
- Mid-block crossing on Cherry between 24th and 25th Sts.
The community agreed this is the preferred crossing on Cheery St to the LPP. The design of the crosswalk is still undecided, but SDOT prefers the ladder-type striping.
Lead: SPS
Startup: During school construction: 2006-2008
- Traffic calming devices on 25th between Cherry and Alder Sts.
Neighbors are considering a number of ideas to reduce speeding along 25th Avenue. Consensus needed on type, design.
Lead: SDOT/Community
Startup:
- Sidewalk improvements on 25th between Cherry and Alder Sts.
Sidewalks, curbing and gutters needed on the west side of 25th Avenue from Cherry to Alder St.
Lead: SDOT
Startup:

II.

Street Lighting

1. Decorative lighting on Cherry St between 23rd and 25th Sts.

No consensus on what type of lighting; An issue for the community District Council?

Lead: Community District Council?

Startup:

2. Prune street trees on 25th Avenue between Alder and Cherry Sts.

Neighbors on 25th Avenue would like to see more illumination of their street. One suggestion is to cut back the tree limbs 6 to 8 feet, per CPTED's recommendations.

Lead:

Startup:

III.

Streetscape

1. Prune shrubs at the intersection of 23rd and Alder St.

Shrubs obscure visibility of traffic on 23rd particularly for vehicles exiting Alder St. Advise owner of hazardous condition.

Lead: DPD/Police

Startup:

2. Benches, trash receptacles, and artwork placed along the school's perimeter streets.

Community and Arts consultation needed.

Lead: Community Groups in association with the Arts and Cultural Affairs Office

Startup:

IV.

Landscape

1. Tree planting on school perimeter streets

Consult with City Arborist and community members.

Lead: SDOT/DON/Community

Startup:

2. Plant native grasses and plants along school perimeter streets

Consult with DPD, City Arborist.

Lead: DON/DPD/Community

Startup:

V.

Legacy and Promise Promenade

1. Path development from student plaza to the Cherry St crosswalk
Per project proposal, SPS will develop pathway linking the Garfield Arts auditorium with the Horace Mann parking lot.
Lead: SPS
Startup: During school construction 2006-2008.

2. Benches and trash receptacles along the LPP
Decorative benches and receptacles designed by local artists reflecting area's cultural heritage
Lead: Community/Arts
Startup: summer, 2008

3. Directional signs on along the LPP
Parks and school properties collaborate on wayfinding signs
Lead: SPS
Startup: summer, 2008

4. LPP pathway lighting
Low pole lighting design and placement
Lead: SPS
Startup: summer, 2008

5. LPP pathway landscaping
SPS and community to collaborate on grasses and artifacts to enhance the LPP pathway
Lead: SPS/Community
Startup: summer, 2008

CENTRAL AREA ACTION PLAN II
[Neighborhood Plan]

**Highlights that speak directly to elements of
Garfield High School's Renovation Project –
Both Building and Grounds.**

For Additional Information Contact:

Robert Stephens, Jr.
Contributing Author
947 – 27th Avenue
Seattle, WA 98122
(206) 323-0521

The following Action Plan notes are to be used as reference points to the Central Area Neighborhood Plan Documents that Robert Stephens, Jr. presented at our committee meeting.

The notes are to stimulate your "brainstorming" process, on how to use the Neighborhood Plan, in support of our Renovation of Garfield High School.

Please go through the document and use the reference notes to come up with your own ideals of how Garfield's fits into the Central Area Neighborhood Plan.

The Neighborhood Plan is part of the City of Seattle's Twenty Year Comprehensive Plan.

The Plan is on the City of Seattle web page under Department of Neighborhood. A hard copy is in Garfield High School Library and Douglas Truth Library.

GARFIELD HIGH SCHOOL RENOVATION

Section of the Central Area that relates to Garfield High School and the surrounding Parks and Recreation Campus

Chapter 1.0 to 2.0

- pg. 4 23rd Avenue Corridor Project: lighting and
- pg. 10, (2.6) design improvements.... link the area with its rich cultural history.
- pg. 5; Gateways, Spaces, and Gathering Places:
- pg. 11, (2.7)especially the Central Gateway Projects
- pg. 13 (2.12) Human Development – Central Area Health & Social Service Alliance: Planning for health and human development encompassed community building, education and employment, health and social services, and community safety.

Chapter 3.0

- pg. 15 Land Use & Open Space Highlights (All): Attention Architect Company
- pg. 15 Planning Context:
- pg. 17 Map: Boundary Urban Village Factor of Land
- pg. 19, (3.2) Use Planning (esp. for Architect).
Zoning: "Recommendations for the revision of zoning to better reflect community preferences for the development character of an area, provided that consistency between zoning and this plan is maintained."
- pg. 32 (3.5) Open Space:
- pg. 32 LU 3.5.1. Comprehensive Plan Goals
- pg. 32 LU 3.5.2 Community Gardens
- pg. 32 LU 3.5.3 Improve Maintenance of Existing Facilities especially Garfield Park (Fields)
- pg. 32 LU 3.5.4 New Open Space Facilities. New open space opportunities should be explored for community oriented use and for increasing green space and natural environment in the Central Area.
Possible new facilities include:

* Properties along 23rd Avenue in support of the parkway concept. Coordinate elements of transportation, urban design, and open space as part of designing and implementing the "Central Gateway" project. [pg. 33 MAP]

pg. 35 Chapter 4.0 (All)

pg. 37 Especially:

(4.2) Central Area Design Guidelines.

pg. 37 Action: All

pg. 37 UD 4.2.2: Commercial/mixed use/minor institution Development Design Guidelines.

pg. 38 MAP: Projects within the planning boundary line should utilize Central Area Design Guidelines.

pg. 40 UD 4.2.3: Implementation. Work with the Seattle Department of Construction and Land Use to design and develop a program for assisting developers understand the aesthetic and compatibility preferences for non-threshold projects.... "Includes: Minor institutions".

pg. 40 4.3 Streetscape Improvements
Action: Promote capital improvement that will encourage "pedestrianism" among residents, employees, and shoppers. Use all area streets and sidewalks as avenues to walk to, work, school, recreational facilities, shopping districts, and visit neighbors. Identify Key Pedestrian streets and areas where neighborhoods can be linked together. Refer to specific action within Transportation, Chapter 7.0.

pg. 40 UD 4.3.1: Key Pedestrian Streets.
Note: Bus: Flow at 23rd metro; yellow bus flow and pedestrian conflict at Alder Street; pedestrian traffic to 23rd and Jackson lunch and after school. In short all pedestrian and vehicle traffic on the Garfield campus; 23rd Avenue - 25th; Alder to Cherry.

pg. 40 UD 4.3.2: 23RD avenue Corridor.
Designate the stretch of 23rd Avenue from Madison Street to the north to Jackson Street to the south, as the arterial "backbone" of the Central Area, promoting the following elements:

Special Notes: Opportunity for green space...
youth artworks.
More pedestrian oriented use
(coordinate with land use
concepts).
Establishment of a Central Area
heritage trail with interpretation
kiosks, artworks, community
bulleting boards. Use 23rd and
adjacent side streets.
Creation and installation of
public art pieces.

pg. 41 4.4: Historic Resources Architect (Back-up for
landmark action).
Action: Recognize the historical importance
and significance of the Central Area's single
"family-residential housing stock, institutional
buildings (old schools, etc.)
* Incorporate their elements into building
* design guidelines, housing maintenance
* programs, and possible designation of historic
and cultural resources.
Note: "Supportive the request for the schools
preservation request.

pg. 41 UD 4.4.3: Commercial and Institutional
Structures. Request that the city conduct a
historic resources survey of commercial and
institutional structures throughout the Central
Area planning boundary.
..... specifically, denote key African
American Landmarks that currently exist or
have been demolished or hidden by other
facades....."

pg. 42 4.5: Gateways: Public Arts and Entry
Statements

UD 4.5.1: Theme and Identity

UD 4.5.2 Identification Program.

pg. 43 MAP: Gateway into the Central Avenue.

Chapter 5.0

pg. 51, (5.5) Increase Employment for Central Area Youth
Action:Design a youth employment
program for the Central Area involving the City,
Community -- based agencies, and the business
community. (2) Initiate a youth entrepreneurial
consortium to teach skills and instill attitudes
needed to start and sustain small businesses (3)

Develop meaningful vocational opportunities and viable career paths as an alternative to a 4-year college degree.

pg. 51 ED 5.5.1: Youth Employment Program.

pg. 51 ED 5.5.2: Employment Consortium.

pg. 51 ED 5.5.3: Recruit local entrepreneurs, schools and programs such as ROPE to help design and implement this program.

pg. 51 ED 5.5.5: Youth Entrepreneurship.

pg. 51 ED 5.5.6: Youth Apprenticeship.

Chapter 7.0 Transportation

pg. 73 7.3: Non-Motorized Modes: Pedestrian Safety.
Action: Improve safety for pedestrian needing to cross Central Area arterials to reach school, parks, businesses, services, and transit.

pgs. 73/74 T-7.3.2: Explore options for improving the safety of the existing mid-block crossing (Cherry at Garfield Community Center and Jackson at Central Park Trail).

pg. 76 7.5: Key Pedestrian Streets.
Action: Design key Central Area streets as "Key Pedestrian Streets" for the purpose of creating economic centers and social gathering place that improve quality of life and serve as the heart of a community.

pg. 76 T-7.5.2: Designate other key arterials as key pedestrian streets, including Martin Luther King Jr. Way, 23rd Avenue, Cherry Street between 23rd and Martin Luther King Jr. Way.
[see also land use..... Matrix].

pg. 77 MAP: Figure 25: Key Pedestrian Street and Key Pedestrian Connector street for the purposes of creating economic centers and social gathering places that improve quality of life and serve as the heart of a community.

pg. 78 MAP: Figure 26: Heritage Trail Pedestrian and Bicycle Trails.

pg. 79: T-7.6: Traffic Circulation. Traffic Calming.
Action: Slow traffic speed on arterials and neighborhood streets.

- *** T-7.6.1: Reduce speeds on arterials and neighborhood streets. [Note: See Trans.].
Note: Garfield Block. 23rd Alder-Jefferson; Alder 23rd-24th; 24th-Alder-Cherry; bus stop(s) metro and yellow bus 24th-Alder.
- pg. 79 T-7.7: Traffic Circulation: Neighborhood Cut Through Traffic.
- pg. 83 T-7.11: Arterial Streetscapes.
Action: Enhance the sense of community and increase the feeling of pride among Central Area residents,.... etc.
- pg. 83 T-7.11.2: "23rd Avenue Corridor. Recognize 23rd Avenue as the arterial backbone that links the Central Area's major economic hubs....."
"Work with the Seattle Transportation Department. Department of Park and Recreation and Seattle City Light Tree Planting Program to implement the "23rd Avenue Central Corridor" concept. Proposed improvement includes:
- "Identify opportunities for planting trees..." incorporating visible landscaped open space new developments"
 - Install textured cross walks or other treatments at key intersections.
 - Provide directional signage ".... leads to different neighborhoods and neighborhood facilities."
 - Provide interpretive kiosks, exhibits and community bulletin boards that could become part of a "heritage route" along 23rd Avenue between Jackson and Madison.
- pg. 85 MAP: Figure 27: Major Arterials.
Business District Streetscape and other street improvements.
- pg. 91 Read: Chapter 8.0 Human Development
- pg. 92 Note: 8.2 Existing Conditions: Community Building Education and Employment.
Outcome: Garfield
Dropout/Graduate: Garfield
Employment Characteristics... Table pg. 95.
- pg. 96, (8.4) Community Building:
Action: 1 - "READ ALL HD"
HD-8.4.1.1.A "Partnerships for Accessing and Sharing Information. Health and Social Service Community".

**CENTRAL AREA NEIGHBORHOOD MATRIX SUMMARY
ITEMS RELATED TO THE GARFIELD HIGH SCHOOL DEVELOPMENT**

STREET IMPROVEMENTS:

Plan Matrix Number: OI:27			
Neighborhood: Central Area -			
Consider making 25th one-way for block south of Cherry			
Actions	Project Lead	Completion Target Date	Work Status
SDOT will work with community once a community lead has been identified.	Transportation John Marek 684-5069	Quarter: Year:	In- Progress

Plan Matrix Number: NH:5			
Neighborhood: Central Area - In-Progress			
Designate Cherry between 23rd and MLK as a Key Pedestrian Street.			
Actions	Project Lead	Completion Target Date	Work Status
Rebuild 120 feet of curb and repair sidewalks on Cherry Street between 23rd and 25th Avenues to improve pedestrian safety, add on-street parking and improve access to high schools and community center.	Transportation	Year: 2004	Not started

Plan Matrix Number: NE:11			
Neighborhood: Central Area - In-Progress			
Establish the portions of the Central Area Heritage Trail on 23rd as appropriate. [Note: sidewalk width is very narrow with no buffer along busy street.] Through street improvement and other capital facility projects, utilize 1%-for-Art dollars to support development of a physical trail connecting the Central Park Trail to Madison-Miller via 23rd Avenue or other route. Elements will include: -Artworks with priority going to local Central Area artists, -Decorative streetscape (textured crosswalks). -Historic Interpretive Kiosks/bulletin boards. -Trail signage/markers. -Community directional signs			
Actions	Project Lead	Completion Target Date	Work Status
Seek opportunities to use 1%-for-Arts funding to integrate Central Area Heritage Trail elements into street improvements.	Office of Arts & Cultural Affairs Barbara Goldstein 684-7311	Year: 2004	In- Progress

Plan Matrix Number: NF:2			
Neighborhood: Central Area - Completed			
Hold design charette and workshops, together with members of the Design and Planning Commission, to address Central Gateway issues, including lane configuration, traffic and transit routing, traffic/parking, pedestrian, bicycle and transit access, urban design, and open space opportunities. Develop recommendations and solutions.			
Actions	Project Lead	Completion Target Date	Work Status
Coordinate with the community to identify priorities for expenditure from the 1999-2000 budget for Central Area Gateway improvements.	Transportation Sandra Woods 684-5298	Year: 2000	Completed

**CENTRAL AREA NEIGHBORHOOD MATRIX SUMMARY
ITEMS RELATED TO THE GARFIELD HIGH SCHOOL DEVELOPMENT**

Plan Matrix Number: NB-15			
Neighborhood: Central Area - In-Progress			
Improve signal timing to move traffic in and out of the area at moderate speeds (25 to 30 mph).			
Actions	Project Lead	Completion Target Date	Work Status
SDOT will Evaluate.	Transportation Tony Mazzella 684-0811	Year: 2003	Completed

Plan Matrix Number: NH-8			
Neighborhood: Central Area -			
Install curb bulbs at Cherry at Garfield Community Center mid block.			
Actions	Project Lead	Completion Target Date	Work Status
SDOT will install curb bulbs at Cherry at Garfield Community Center mid-block.	Transportation Tony Mazzella 684-0811	Quarter: Year:	Completed

Plan Matrix Number: NE-6			
Neighborhood: Central Area - In-Progress			
Install textured crosswalks at arterial intersections :Madison, Union, Cherry, Yesler, and Jackson.			
Actions	Project Lead	Completion Target Date	Work Status
SDOT will install textured concrete crosswalks at various intersections.	Transportation Tony Mazzella 684-0811	Quarter: 2 Year: 2003	In- Progress
SDOT will install textured crosswalk at 23rd/Jackson.	Transportation Tony Mazzella 684-0811	Quarter: 2 Year: 2004	Not started
SDOT will install textured crosswalk at 23rd/Union.	Transportation Tony Mazzella 684-0811	Year: 2003	Completed

Plan Matrix Number: NB-23			
Neighborhood: Central Area - In-Progress			
Plant street trees as opportunities arise on arterials foreseen as key pedestrian streets such as East Madison, Olive Way, 19th Avenue, and 23rd Avenue.			
Actions	Project Lead	Completion Target Date	Work Status
Plant trees on key pedestrian street arterials (with technical assistance from SEATRAN).	City Light Chris Larsen 684-3698	-Ongoing	In- Progress

**CENTRAL AREA NEIGHBORHOOD MATRIX SUMMARY
ITEMS RELATED TO THE GARFIELD HIGH SCHOOL DEVELOPMENT**

Plan Matrix Number: NE-3			
Neighborhood: Central Area - In-Progress			
Review bus stop location along 23rd and make recommendations for consolidation as appropriate, and then recommend bus stop improvements including lighting and shelters.			
Actions	Project Lead	Completion Target Date	Work Status
Review bus stop locations on 23rd and make recommendations for consolidation as appropriate and bus stop improvements	KC/Metro	Quarter: 1 Year: 2004	In-Progress

COMMUNITY ART:

Plan Matrix Number: NB-29			
Neighborhood: Central Area - On-Going			
Commission public artworks, community interpretive kiosks, banners, and special paving to commemorate the area's rich African-American history and other important community features.			
Actions	Project Lead	Completion Target Date	Work Status
Commission public artworks, community interpretive kiosks, banners, and special paving to commemorate the area's rich African-American history and other important community features.	Office of Arts & Cultural Affairs	-Ongoing	In-Progress

SEATTLE PUBLIC UTILITIES -- WATER MAIN REPLACEMENT:

Plan Matrix Number: OI-37			
Neighborhood: Central Area - On-Going			
Coordinate water main replacement with community projects and develop program to assist low-income residents with replacement of connecting service lines.			
Actions	Project Lead	Completion Target Date	Work Status
Project managers will routinely consult with the community and other City departments on coordination.	SPU Karen Reed 684-4552	-Ongoing	On-Going

CENTRAL AREA PLAN STEWARDSHIP:

Plan Matrix Number: CA-1			
Neighborhood: Central Area - Completed			
Provide support for Central Area Action Plan II Stewardship			
Actions	Project Lead	Completion Target Date	Work Status
Create a Central Area-wide stewardship newsletter to keep residents informed about the progress of implementation of their neighborhood plan. Consolidate information from individual newsletters produced by neighborhood councils and other community organizations.	Community - Stewardship Organization Bill Wright 322-1162	Year: 2001	Completed

"R" TLC

Central Area Neighborhood Improvement Project(s) Budget Discussion Notes

Projects: Garfield Teen Life Center, Garfield High School Green House, Memorial Park honoring African American Veterans of Washington State

Proposed financial resources: Pro-Parks Levy (\$198.2 million), Community Centers Levy (\$36 million), and Seattle City Light "Solar" Capital Improvement Project funds

Note Levy Projects: ... "finished 28 of the 140 in 2003"... "anticipate completing 25 more in 2004."

- I. Garfield Teen Life Center/Parks' shared facility Seattle School District
 - A. Needs: financial resources to develop and improve "site" additions and "Site" improvements that goes beyond the base-line "site replacement". Construction funds available in Garfield High School Renovation Budget
 - B. Example:
 - 1. Four new classrooms
 - 2. One new game room for table games & tech/electronic games
 - 3. One upgrade & tech improve kitchen
 - 4. Over all tech upgrade: facility & equipment

- II. Garfield High School Solar Green House/shared facility Garfield Teen Life Center & Garfield Community Center intro-age-intro-generational Gardening Programs
 - A. Base-line funding: Garfield High School Renovation Budget
 - B. Additional required funding resource: Seattle City Lights Solar Capital Improvement Projects funding

- III. African American Veterans Group of Washington State Memorial Park on Jackson Street [REDACTED]
 - A. Park Site to honor those African American Veterans of Washington State that has given of their time and in some cases, their lives, to protect the "Freedom" for the People of Washington State in specific and the World in general

B. Process: {work in concert with the African American Veterans Group of Washington State}

1. Phase I:

Secure site control from the City of Seattle {Dept. of Neighborhoods}

2. Phase II:

Secure finance to purchase proposed site from the City of Seattle
Proposed funding: Pro-Parks, King County Open Space,
Washington State Parks Services, National Parks Services, US
Department of Defense, City of Seattle (fleets & facility), City of
Seattle Race & Social Justice, Seattle & King County historic
Preservation, etc.

3. Phase III:

a. Park's design & construction

b. Secure funds: Plan-Design-Construct: core/buck funding
from private individuals; businesses; foundations;
organizations; Federal-State-Local governmental military
& defense departments, Parks Systems, Arts & Cultural, and
Historic Preservations

4. Phase IV:

a. Park Ground-Breaking {Tuskegee Airman living in Seattle}

b. Park's Dedication-Celebration {General Collin Powers}

IV. Park is adjourn to the site of the Lemmanuel Jones Veterans Research Center

Submitted by: **Community:** Robert Stephens, Jr.,
Garfield High School Renovation Committee Member
Garfield Parks & Recreation Campus Advisory Council Member
Secretary-Board of Directors: African American Veterans Group of
Washington State

PARKS:

East District/Central District Operation Manager: _____

Garfield Teen Life Center Director: _____

Garfield Community Center Manager: _____

Campus Advisory Council Signs needed (?????) advise RAB

Locations for Artwork - Garfield High School Rebuild

Garfield Bulldogs: Legacy and Promise

- ❖ Above theatre doors - Performing Arts Building lobby
 - Large panels (7-9) visible from the parking lot depicting grads who have had a positive impact on the community (culture in general?)
 - These could be done as a greater community/alum project with each panel broken into small segments a la Chuck Close to be done by individuals (\$donation to cover project expenses)



- ❖ Track wall - On the outside wall between the gym and field, facing the track
 - Metal figures possibly depicting vintage uniforms from a specific year (legacy)
 - History of the field and how it relates to the community

- ❖ Gym corridor space
 - Mural of athletic activities
 - Use this possibly for the Arts Commission approved artist location?
 - Mural designed/done by students on large panels to be removable as needed

- ❖ Lower plaza (outside) between main bldg and AP/Athletics bldg
 - Quotes as done on south side of building
 - Bronze bulldog paw prints
 - Cast any bronze at the Cleveland foundry as part of visual arts class project (this applies to this and the Pathway of Years below)

- ❖ Upper plaza (outside) between main bldg and track
 - Location of commemorative rhodys and possible "peace park" using concrete pavers with mosaic inlays done by current students

- ❖ Inside main building entrance
 - Hall of Fame - grads who have distinguished themselves: photos mounted alongside a written paragraph describing their accomplishments (research to be done by current history students)
 - William Nakamura
 - Roger Shimomura
 - Minoru Yamasaki
 - Quincy Jones
 - Lots more individuals to be identified

- ❖ Outside main building entrance
 - 2 huge bulldogs (either concrete or bronze) in scale with the entrance

- ❖ In the four small learning commons and/or entrance nodes
 - Possibility of an academic theme or element from the designs on the outside of the building or ...?

- ❖ Sidewalks around building
 - Pathway of Years to start at the main entrance and encircle the building
 - Pavers for each graduating class since Garfield was first built
 - Each one designed by a class member or adopted and designed by a current/alum group

- ❖ Main commons
 - Name tiles in floor (fundraiser)

- ❖ Interior courtyard
 - Sculpture or mosaic pavers (done by visual arts)

All of these projects to be presented to PTSA on January 10 with the hope that each one will have individuals interested in working on a committee to get the projects going and finished prior to the building of the school (or at least before the finish of the building project). Funding will need to be sought from grants sources or the projects need to be self-supporting via donations.

Quarterly newsletter published by the Garfield Community Council, its surrounding Block Watch Groups, and neighbors.

The Garfield Community

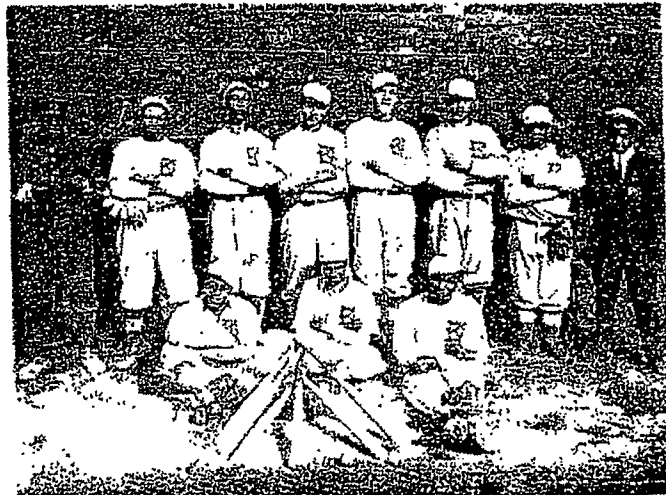
Quarterly newsletter published by the Garfield Community Council, its surrounding Block Watch Groups, and neighbors.

Volume 1 - Issue 2 Apr 99

In This Issue

- Meeting April 13th, 7 - 8 pm
- Sunday Afternoons at Garfield Park
- Washington Insurance Council
- Houses on 23rd and Yesler
- Remembering Michael Ealy
- Free Community Workshop

Mother's Day
May 9th



Keystone Giants - Seattle - 1913
Part of the wonderful history of Garfield Park. Photo courtesy of Jacqueline E. Alexander Lawson.

Next Meeting is Tuesday, April 13th

The Garfield Community Council and area Block Watch meeting will be held from 7:00 pm - 8:00 pm in the basement of the Douglass-Truth Library, on the corner of 23rd Avenue and Yesler Way. Everyone is invited to attend, meet neighbors, and discuss issues of concern.

If you have items you would like to place on our monthly meeting agenda, please send those to us at:

Garfield Community Council
PO Box 22198
Seattle, WA .98122-0198

Sunday Afternoons at Garfield Park

On Sunday, May 2nd, the Garfield Community Council will be sponsoring a community wide event at Garfield Park. A grand opening ceremony will take place at 1:00 pm. There will be youth baseball games, a dedication ceremony, free food, and a celebration of the new improvements at the Park.

Many of the former players and stars from this area will play in an old-timers game to rededicate one of the oldest baseball fields and historic playfields in Seattle.

continued on page 5

Please join us at our next meeting: Tuesday, April 13th,
7:00 pm - 8:00 pm, Douglass-Truth Library.

Our meeting is an opportunity for you to get to know your neighbors, tell us your concerns, and share your ideas on what you want the Garfield Community Council to be addressing.

Damon Burfict
Producer/CEO

16 Track Digital Recording Studio



Independent Interprizes

Pgr. (206) 855-2568

**HELP WANTED:
MALE AND FEMALE
RAP AND HIP HOP ARTISTS
LOCALLY OWNED AND
OPERATED RECORDING STUDIO
IN THE GARFIELD COMMUNITY**
We have the equipment and phat beats
if you have the energy and talent! For
consideration fax the following
information: name, address, date of birth,
phone number/s, past experience, brief history
and a sample of one of your verses or songs.
FAX NUMBER IS (206) 329-0309
BROKE? Not a problem if you have the Talent!
RAPPERS WANTED!!!

This newsletter was made possible with the generous support and funding of the Washington Insurance Council (WIC) and Seattle Neighborhood Action Program (SNAP).

DEXTER
LIMOUSINE

CRAZY PINOY PROMOTIONS

24 HOUR CELLULAR
206-949-1020

206-860-4052
206-324-8650



Grand Reopening of Garfield Park

continued from page 1

As far back as 1890, African-American families enjoyed watching and playing baseball in this community. Muriel Pollard, a Garfield resident, and graduate of Garfield High School, remembering the 1920's and 1930's,

"When I was a girl we used to play baseball, neighborhood baseball - boys and girls - right out in the middle of the street. It seems like we spent a lot of time playing baseball. There was a colored baseball team and they used to play on Sundays. We used to go over to Garfield Park and they used to play over there, and that was our recreation for Sunday afternoon."

This excerpt was taken from the book, "Sunday Afternoons at Garfield Park," written by Lyle Kenai Wilson.

The fields were completely regraded, resodded, and equipped with more drainage. There will be new covered dugouts, bleachers, and a new scoreboard.

Former players and fans are encouraged to come out to the grand opening ceremony May 2nd to celebrate this wonderful community asset. If you are interested in volunteering or finding out more, please call Curtis Knopf at 206.322.1522.

Please support our local
businesses

VC COPY AND BUSINESS SERVICES
MARGET CHAPPEL CERTIFIED WMBE

- COLOR COPIES • DUPLEXING • FAXING • SIGNS
- LARGE COLOR POSTERS • BANNERS • FLYERS
- BUSINESS CARDS • BROCHURES • T-SHIRTS
- LAMINATIONS • HIGH SPEED COPYING

TEL. (206) 328-7022 FAX (206) 328-0346

220250 JACKSON ST. SEATTLE, WA 98144

PAPERBACK NON-FICTION ORIGINAL \$9.95

Seattle's Black Baseball Teams

From the turn of the century through the early 1960s, the Negro baseball ran in two parallel and seldom converging paths: one for the other white. The Greater Puget Sound saw its own line of African American baseball teams and players, but what was revealed here with many rare, previously unpublished photographs.

The author, Lyle Kenai Wilson, grew up in Belltown, Seattle, graduated from the University of Washington Law School, and practices law in Mill Creek, Washington. He is a member of the Society for American Baseball Research and the Negro League Baseball Museum and has researched and written extensively on the subject of African American baseball teams and players.

Praise for Sunday Afternoons at Garfield Park

"*Sunday Afternoons at Garfield Park* is a terrific book about a significant, but up-to-now untold chapter in Northwest regional baseball." Bob Davasi, owner Everett AquaSoc

"Finally, the recognition that is due the local African American baseball players flows out of the pages of this wonderful book."

Charles Russell

"With *Sunday Afternoons at Garfield Park* Wilson has hit the home run right out of the ballpark." Larry Deifest, Director of Park Management, Seattle Mariners

Library of Congress Catalog
Card Number 96-78997

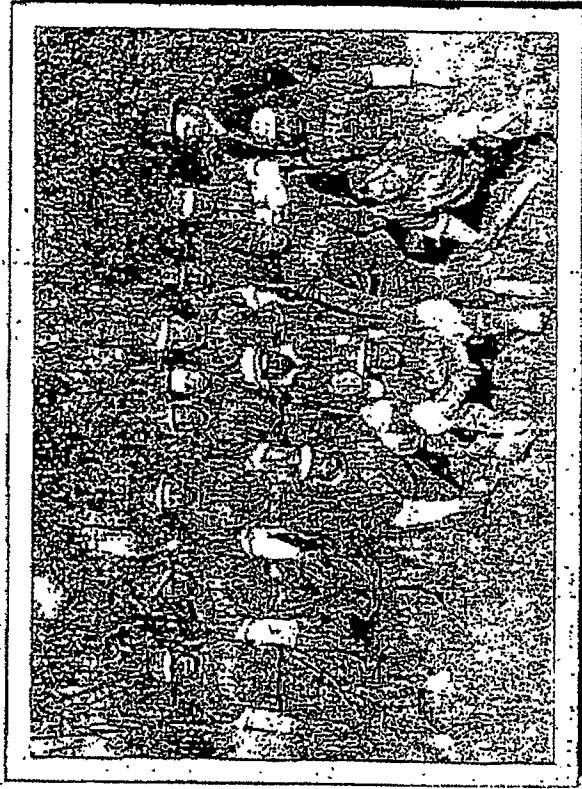
To order by mail contact:
Lowell Printing & Publishing
PO Box 31136 • Everett, WA 98203
Phone 1-206-599-3718
Add: \$3.00 for postage/handling
WA residents add 7.9% sales tax.



The PRINT SHOP and BEND SINCE 1975

SUNDAY AFTERNOONS AT GARFIELD PARK

Seattle's Black Baseball Teams • 1911-1951



© 1997 Lyle Kenai Wilson

Lyle Kenai Wilson

"Mr. Wilson has done an excellent job of summarizing the experiences of many..."